



**Winooski School District  
Winooski, VT**

**School Year 2024-25 Enrollment Projection Report**

*Copyright, New England School Development Council, 2024*

# Table of Contents

Section	Page
Enrollment Summary.....	1
Historical Enrollment Table.....	2
Historical Enrollment Graph.....	3
Projected Enrollment Table.....	4
Projected Enrollment Graph.....	5
Historical & Projected Enrollment Graph.....	6
Historical & Projected Enrollment in Grade Combinations Line Graph.....	7
Historical & Projected Enrollment in Grade Combinations Stacked Column Graph.....	8
Birth to Kindergarten Relationship Graph.....	9
Additional Information .....	10
New England's PK-12 Enrollment Trends.....	11
Projection Methodology and Reliability .....	12

# Enrollment Summary

NESDEC is pleased to send you this report displaying the past, present, and projected enrollments for your District. It is important to update enrollment projections every year to identify changes in enrollment patterns. Ten-year projections are designed to provide your District with yearly, up-to-date enrollment information that can be used by boards and administrators for effective planning and allocation of resources. We received the enrollment data from the District, and we assume that the method of collecting this data has been consistent from year to year.

Birth data informs Kindergarten enrollment. Each fall, NESDEC secures birth data from State sources, providing a snapshot in time as to actual and provisional births as reported by the State, and then uses this birth data to predict Kindergarten enrollments. We only use Fall birth data to assure consistency in reporting from year to year. Estimated births, which are an average of the previous five years of birth data, are based on this same snapshot. NESDEC acknowledges the variability of the provisional and the estimated birth data, and notes that the projected Kindergarten enrollments may serve as a guide to future planning.

Enrollment projections are more reliable in Years #1-3 in the future. Projections four to ten years out may serve as a guide to future enrollments and are useful for planning purposes. In light of this, NESDEC has added a “Spring Update Refresher” enrollment projection at no cost to affiliates. For more information, please refer to the Projection Methodology and Reliability section of this document.

The NESDEC enrollment projection fell within 39 students of the K-12 total, 633 students projected vs. 672 enrolled.

Births decreased by 18 from a previous ten-year average of 99 to a projected average of 81. In most districts, Grades 1-8 are very stable in enrollments. However, there have been decreases in 7 of the 8 most recent years, leading to a net decrease averaging 15 students per year.

Over the next three years, Grades K-5 enrollments are projected to decrease by 15 students, Grades 6-8 enrollments are projected to increase by 6 students, and Grades 9-12 enrollments are projected to decrease by 17 students, as students move through the grades.

# Historical Enrollment

School District: Winooski, VT

11/12/2024

Historical Enrollment By Grade																			
Birth Year	Births*	School Year	PK	K	1	2	3	4	5	6	7	8	9	10	11	12	UNGR	K-12	PK-12
2009	101	2014-15	57	69	58	57	55	54	54	55	46	56	41	67	46	40	30	728	785
2010	97	2015-16	115	48	63	65	63	60	52	53	56	52	56	56	45	27	56	752	867
2011	106	2016-17	114	58	51	65	66	64	59	55	53	59	61	58	59	48	0	756	870
2012	124	2017-18	106	69	65	60	61	62	52	53	60	47	66	73	54	61	0	783	889
2013	120	2018-19	118	63	70	64	56	51	64	52	60	55	48	61	59	44	0	747	865
2014	102	2019-20	104	64	57	62	62	58	49	61	52	55	52	54	47	52	0	725	829
2015	91	2020-21	68	69	60	58	57	59	51	47	59	48	57	58	48	57	0	728	796
2016	96	2021-22	62	63	65	55	59	57	55	48	44	62	42	58	55	50	0	713	775
2017	81	2022-23	86	51	61	59	54	53	52	51	43	45	57	44	54	62	0	686	772
2018	76	2023-24	96	55	50	60	50	55	46	53	49	45	45	59	38	56	0	661	757
2019	70	2024-25	94	59	51	51	56	54	56	52	50	47	43	42	54	57	0	672	766

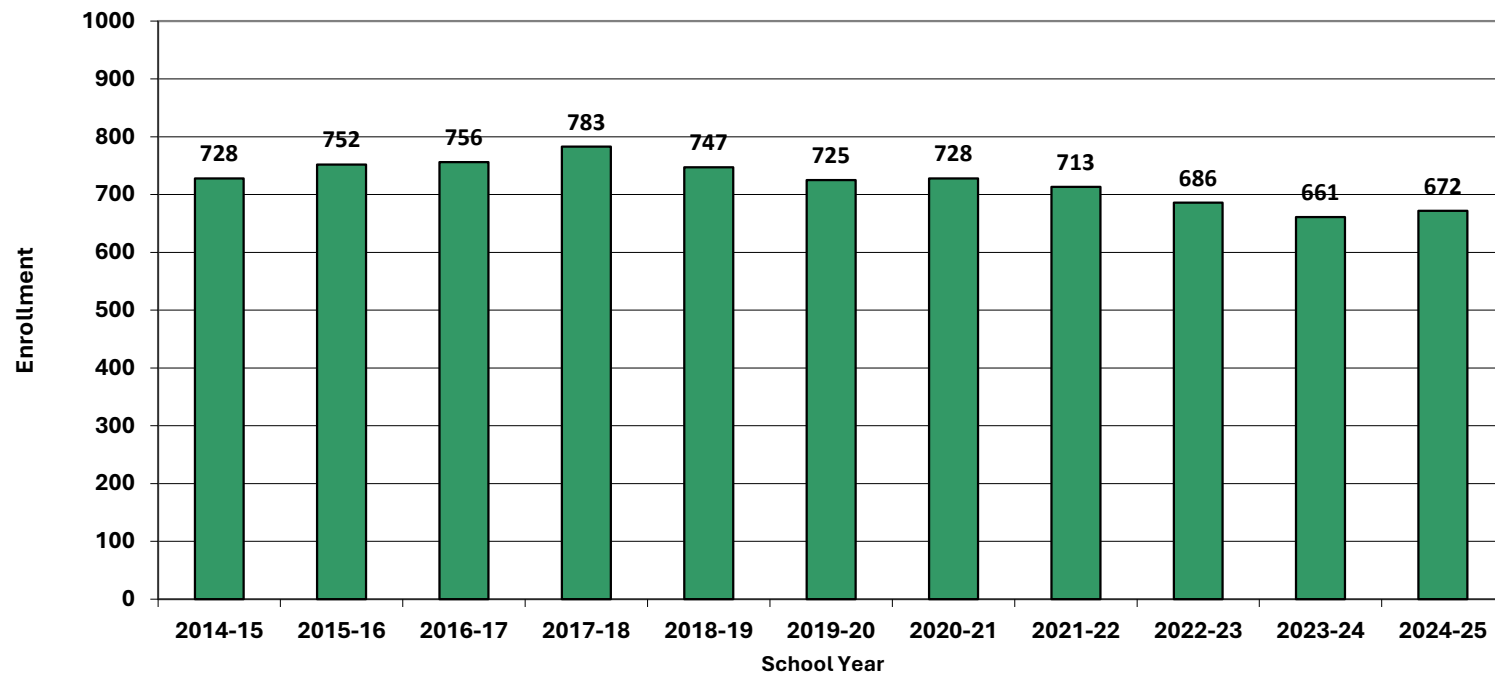
\*Birth data provided by Public Health Vital Records Departments in each state.

\*\* < 10 Not reported, to protect subgroups with fewer than 10 students.

Historical Enrollment in Grade Combinations									
School Year	PK-5	K-5	PK-8	K-8	5-8	6-8	7-8	6-12	9-12
2014-15	404	347	561	504	211	157	102	351	194
2015-16	466	351	627	512	213	161	108	345	184
2016-17	477	363	644	530	226	167	112	393	226
2017-18	475	369	635	529	212	160	107	414	254
2018-19	486	368	653	535	231	167	115	379	212
2019-20	456	352	624	520	217	168	107	373	205
2020-21	422	354	576	508	205	154	107	374	220
2021-22	416	354	570	508	209	154	106	359	205
2022-23	416	330	555	469	191	139	88	356	217
2023-24	412	316	559	463	193	147	94	345	198
2024-25	421	327	570	476	205	149	97	345	196

Historical Percentage Changes			
School Year	K-12	Diff.	%
2014-15	728		
2015-16	752	24	3.3%
2016-17	756	4	0.5%
2017-18	783	27	3.6%
2018-19	747	-36	-4.6%
2019-20	725	-22	-2.9%
2020-21	728	3	0.4%
2021-22	713	-15	-2.1%
2022-23	686	-27	-3.8%
2023-24	661	-25	-3.6%
2024-25	672	11	1.7%
Change	-56		-7.7%

## Grades K-12 Historical Enrollment



# Projected Enrollment

School District: Winooski, VT

11/12/2024

Enrollment Projections By Grade*																				
Birth Year	Births*		School Year	PK	K	1	2	3	4	5	6	7	8	9	10	11	12	UNGR	K-12	PK-12
2019	70		2024-25	94	59	51	51	56	54	56	52	50	47	43	42	54	57	0	672	766
2020	77		2025-26	94	54	57	49	47	56	50	57	49	50	45	43	38	59	0	654	748
2021	80		2026-27	94	57	52	55	46	47	52	51	53	49	48	45	39	42	0	636	730
2022	94		2027-28	94	66	55	50	51	46	44	53	48	54	47	48	41	43	0	646	740
2023	79	(prov.)	2028-29	94	56	63	53	47	51	43	45	49	48	52	47	43	45	0	642	736
2024	80	(est.)	2029-30	95	57	54	60	49	47	48	44	42	49	46	52	42	47	0	637	732
2025	82	(est.)	2030-31	95	58	55	52	56	49	44	49	41	42	47	46	47	46	0	632	727
2026	83	(est.)	2031-32	95	59	56	53	48	56	46	45	46	41	40	47	42	52	0	631	726
2027	84	(est.)	2032-33	95	59	57	54	49	48	52	47	42	46	39	40	42	46	0	621	716
2028	82	(est.)	2033-34	96	58	57	55	50	49	45	53	44	42	44	39	36	46	0	618	714
2029	82	(est.)	2034-35	96	58	56	55	51	50	46	46	49	44	40	44	35	40	0	614	710

Note: Ungraded students (UNGR) often are high school students whose anticipated years of graduation are unknown, or students with special needs - UNGR not included in Grade Combinations for 7-12, 9-12, etc.

Based on an estimate of births

Based on children already born

Based on students already enrolled

\*Birth data provided by Public Health Vital Records Departments in each state.

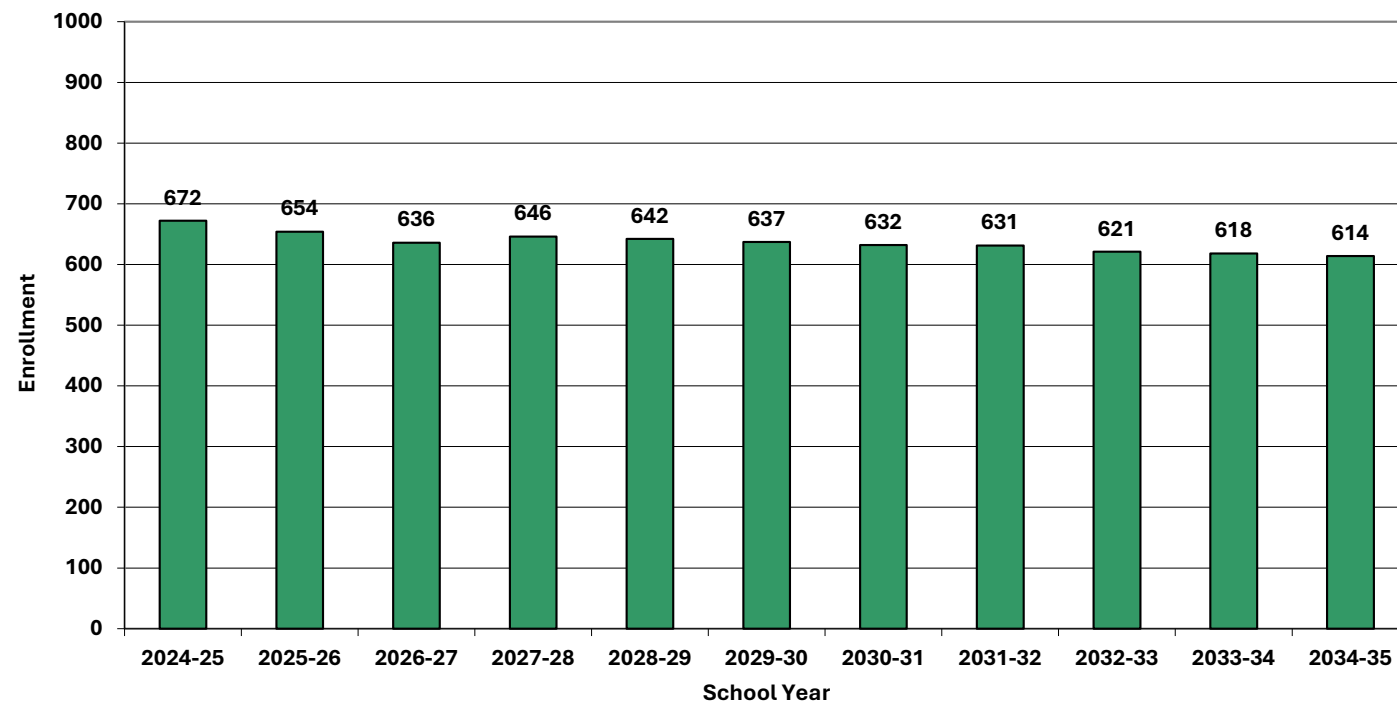
\*\* < 10 Not reported, to protect subgroups with fewer than 10 students.

Projected Enrollment in Grade Combinations*									
School Year	PK-5	K-5	PK-8	K-8	5-8	6-8	7-8	6-12	9-12
2024-25	421	327	570	476	205	149	97	345	196
2025-26	407	313	563	469	206	156	99	341	185
2026-27	403	309	556	462	205	153	102	327	174
2027-28	406	312	561	467	199	155	102	334	179
2028-29	407	313	549	455	185	142	97	329	187
2029-30	410	315	545	450	183	135	91	322	187
2030-31	409	314	541	446	176	132	83	318	186
2031-32	413	318	545	450	178	132	87	313	181
2032-33	414	319	549	454	187	135	88	302	167
2033-34	410	314	549	453	184	139	86	304	165
2034-35	412	316	551	455	185	139	93	298	159

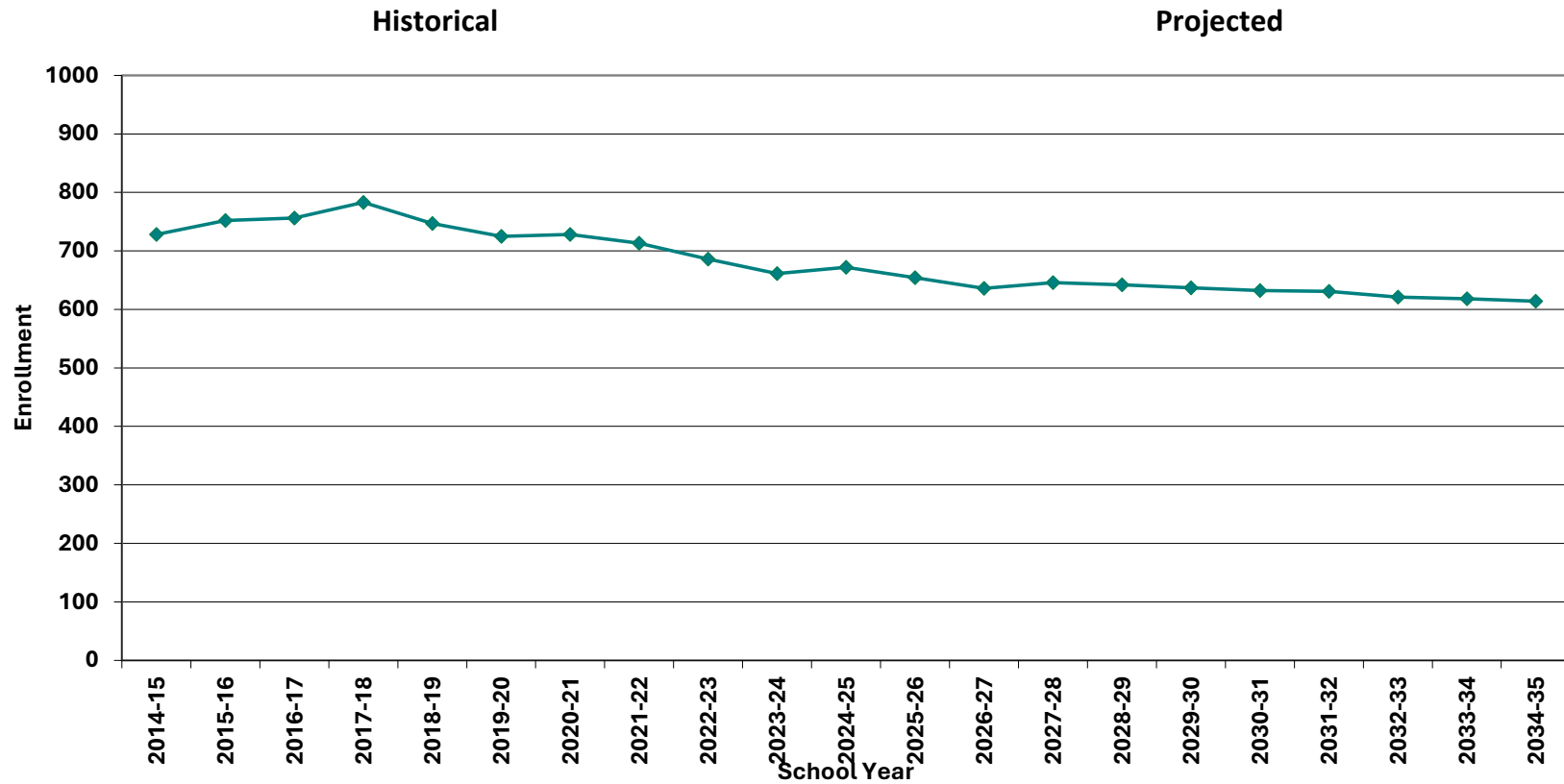
Projected Percentage Changes			
School Year	K-12	Diff.	%
2024-25	672		
2025-26	654	-18	-2.7%
2026-27	636	-18	-2.8%
2027-28	646	10	1.6%
2028-29	642	-4	-0.6%
2029-30	637	-5	-0.8%
2030-31	632	-5	-0.8%
2031-32	631	-1	-0.2%
2032-33	621	-10	-1.6%
2033-34	618	-3	-0.5%
2034-35	614	-4	-0.6%
Change	-58		-8.6%

\*Projections should be updated annually to reflect changes in in/out-migration of families, real estate sales, residential construction, births, and similar factors.

## Grades K-12 Projected Enrollment



# Grades K-12 Historical & Projected Enrollment

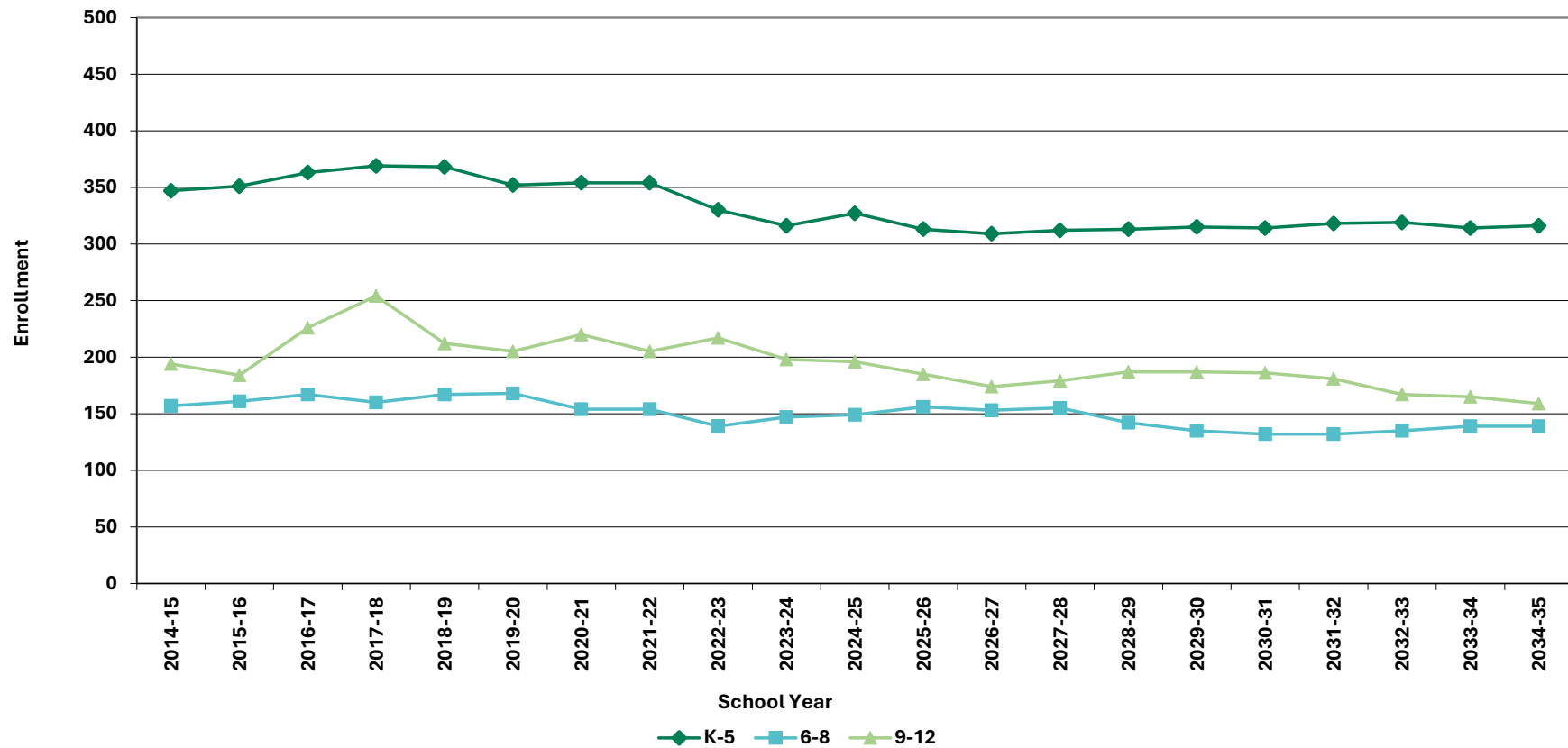




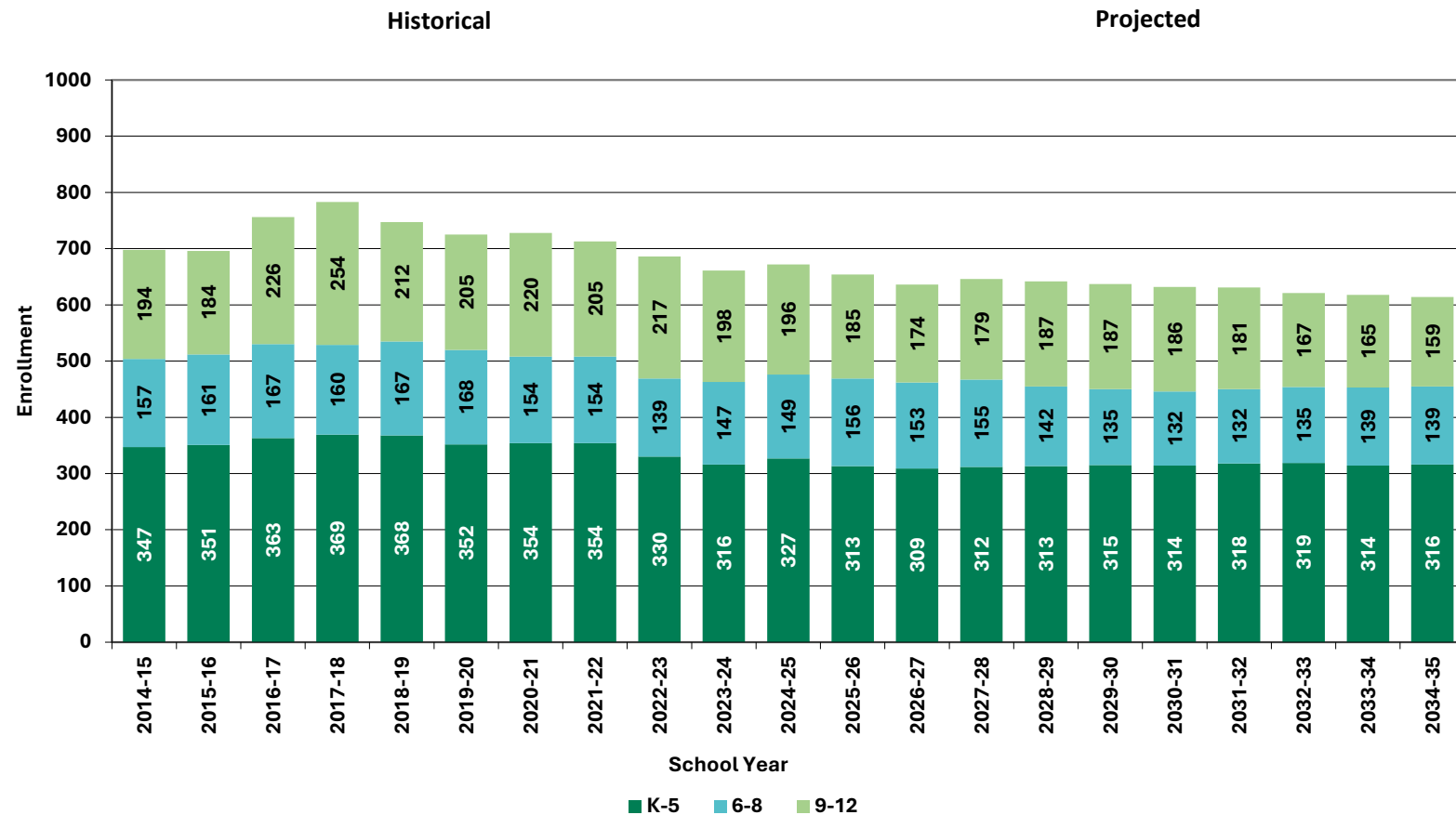
# Historical & Projected Enrollments in Grade Combinations

Historical

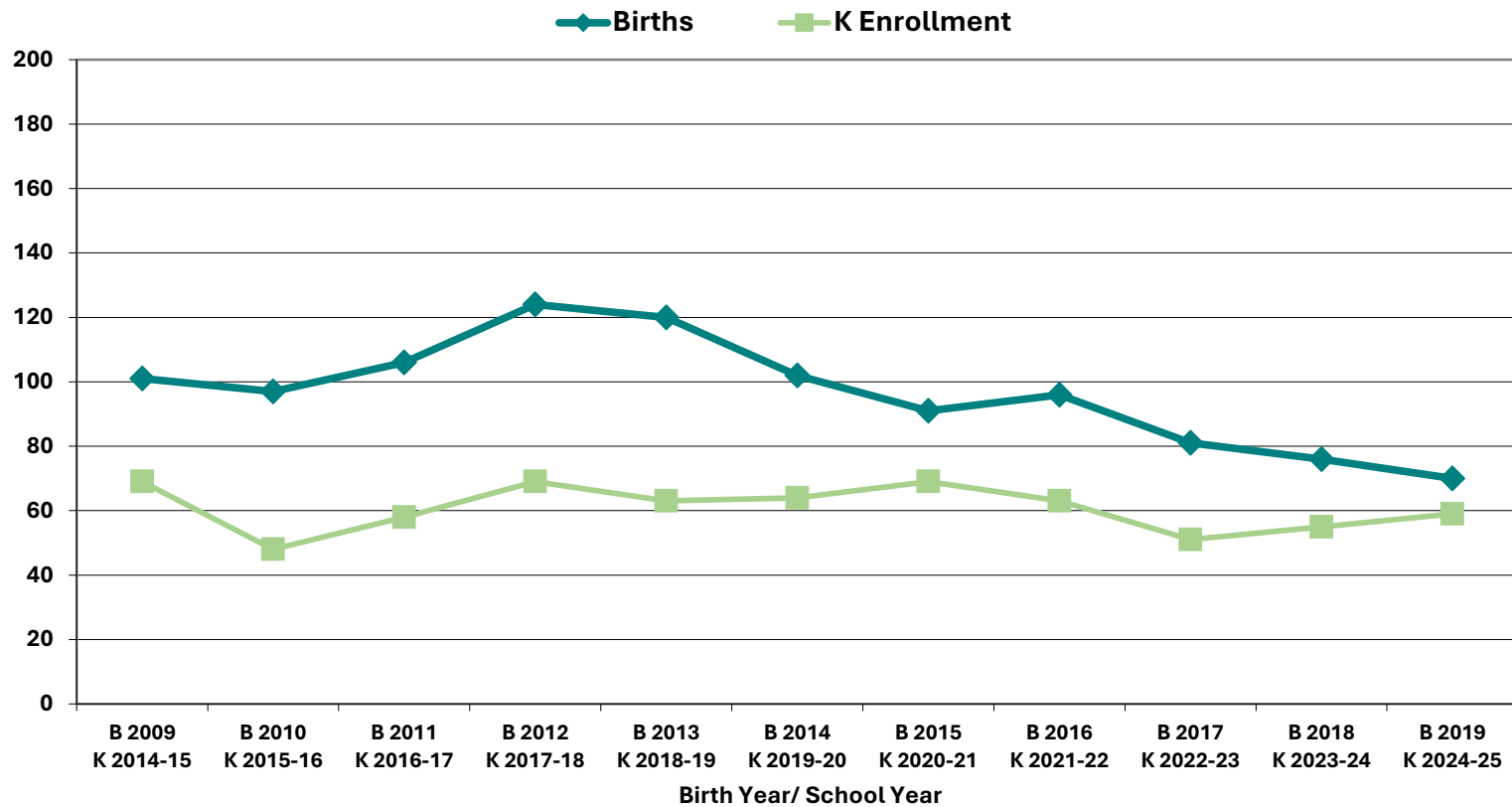
Projected



# **Historical & Projected Enrollments in Grade Combinations**



# Birth-to-Kindergarten Relationship



## Additional Information

School Year	9-12 CTE	K-12 Non-Public	K-12 Choice-In	K-12 Choice-Out	K-12 Out District SPED	K-12 Homeschool
2020-21	27	24	12	< 10 **	13	< 10 **
2021-22	24	19	< 10 **	< 10 **	13	< 10 **
2022-23	20	18	0	< 10 **	17	0
2023-24	29	17	< 10 **	< 10 **	18	12
2024-25	< 10 **	17	< 10 **	< 10 **	15	12

\* Data provided by District.

"n/a" signifies that information was not provided by District.

\*\* < 10 Not reported, to protect subgroups with fewer than 10 students.

Building Permits Issued		
Year	Single-Family	Multi-Units
2020	4	188
2021	3	28
2022	1	2
2023	3	74
2024	1 to date	3 to date

\*Building permit data from HUD.

## New England's PK-12 Enrollments Trends

From 2022 to 2031, the US Department of Education anticipates changes in PK-12 enrollment of -1.8% in the South, -9.7% in the West, -5.0% in the Midwest, -9.1% in the Northeast, and a total of -5.5% nationwide.

State	Fall 2022 PK - 12	Fall 2031 Projected	PK-12 Decline	% Change 2022-2031
USA	49,618,464	46,889,600	-2,728,864	-5.5%
CT	513,513	465,200	-48,313	-9.4%
ME	173,853	162,900	-10,953	-6.3%
MA	923,349	857,100	-66,249	-7.2%
NH	168,909	156,600	-12,309	-7.3%
RI	137,449	127,900	-9,549	-6.9%
VT	83,654	77,300	-6,354	-7.6%

**Source:** U.S. Department of Education, National Center for Education Statistics, Enrollment in public elementary and secondary schools, by region, state, and jurisdiction: Selected years, fall 1990 through fall 2031, Table 203.20, Report Generated Dec. 2023, NESDEC 2.8.24

Although most New England Districts are seeing a decline in the number of births, NESDEC's experience indicates that the impact on enrollment varies from District to District. Almost half of New England Districts have been growing in PK-12 enrollment, and a similar number are declining (often in rural areas), with the other Districts remaining stable.

# Projection Methodology and Reliability

## PROJECTION METHODOLOGY

Cohort component (survival) technique is a frequently used method of preparing enrollment forecasts. NESDEC uses this method, but modifies it in order to move away from forecasts that are wholly computer- or formula-driven. Such modification permits the incorporation of important, current district-specific demographic information into the generation of enrollment forecasts (such as in/out-migration of students, resident births, HUD-reported building permits, etc.). Percentages are calculated from the historical enrollment data to determine a reliable percentage of increase or decrease in enrollment between any two grades. For example, if 100 students enrolled in Grade 1 in 2023-24 increased to 104 students in Grade 2 in 2024-25, the percentage of survival would be 104%, or a ratio of 1.04. Ratios are calculated between each pair of grades or years in school over several recent years.

After study and analysis of the historical ratios, and based upon a reasonable set of assumptions regarding births, migration rates, retention rates, etc., ratios most indicative of future growth patterns are determined for each pair of grades. The ratios thus selected are applied to the present enrollment statistics to project into future years. The ratios are the key factors in the reliability of the projections, assuming validity of the data at the starting point.

## RELIABILITY OF ENROLLMENT PROJECTIONS

Projections can serve as useful guides to school administrators for educational planning. Enrollment projections are more reliable in Years #1-3 in the future and less reliable in the “out-years.” Projections four to ten years out may serve as a guide to future enrollments and are useful for planning purposes, but they should be viewed as subject to change given the likelihood of potential shifts in underlying assumptions/trends, such as student migration, births as they relate to Kindergarten enrollment, and other factors.

Projections that are based upon **the children who already are in the district** (the current K-12 population only) will be the most reliable. The second level of reliability will be for those children already **born into the community but not yet old enough to be in school**. The least reliable category is the group for which an estimate must be made **to predict the number of births**, thereby adding additional uncertainty. See these three multi-colored groupings on the “Projected Enrollment” tab.

Annual updates allow for early identification of recent changes in historical trends. When the actual enrollment in a grade is significantly different (higher or lower) from the projected number, it is important (yet difficult) to determine whether this is a one-year aberration or whether a new trend may have begun. **In light of this possibility, NESDEC urges all school districts to have updated enrollment forecasts developed by NESDEC each October.** This service is available at no cost to affiliated school districts.