



WSD FY25

BUDGET



WINOOSKI SCHOOLS
We are the future.

OUR SCHOOL BUDGET

- A District Budget
- Education Spending
- The Role Of the Board
- Resident Role
- Timeline of Budget Adoption



WINOOSKI SCHOOLS
We are the future.



WSD FY25

All students will graduate from the Winooski School District (WSD) college and career ready at a cost supported by a majority of the Winooski community. WSD students will lead healthy, productive and successful lives and engage with their local and global community.



WINOOSKI SCHOOLS
We are the future.

STRATEGIC STATEMENTS

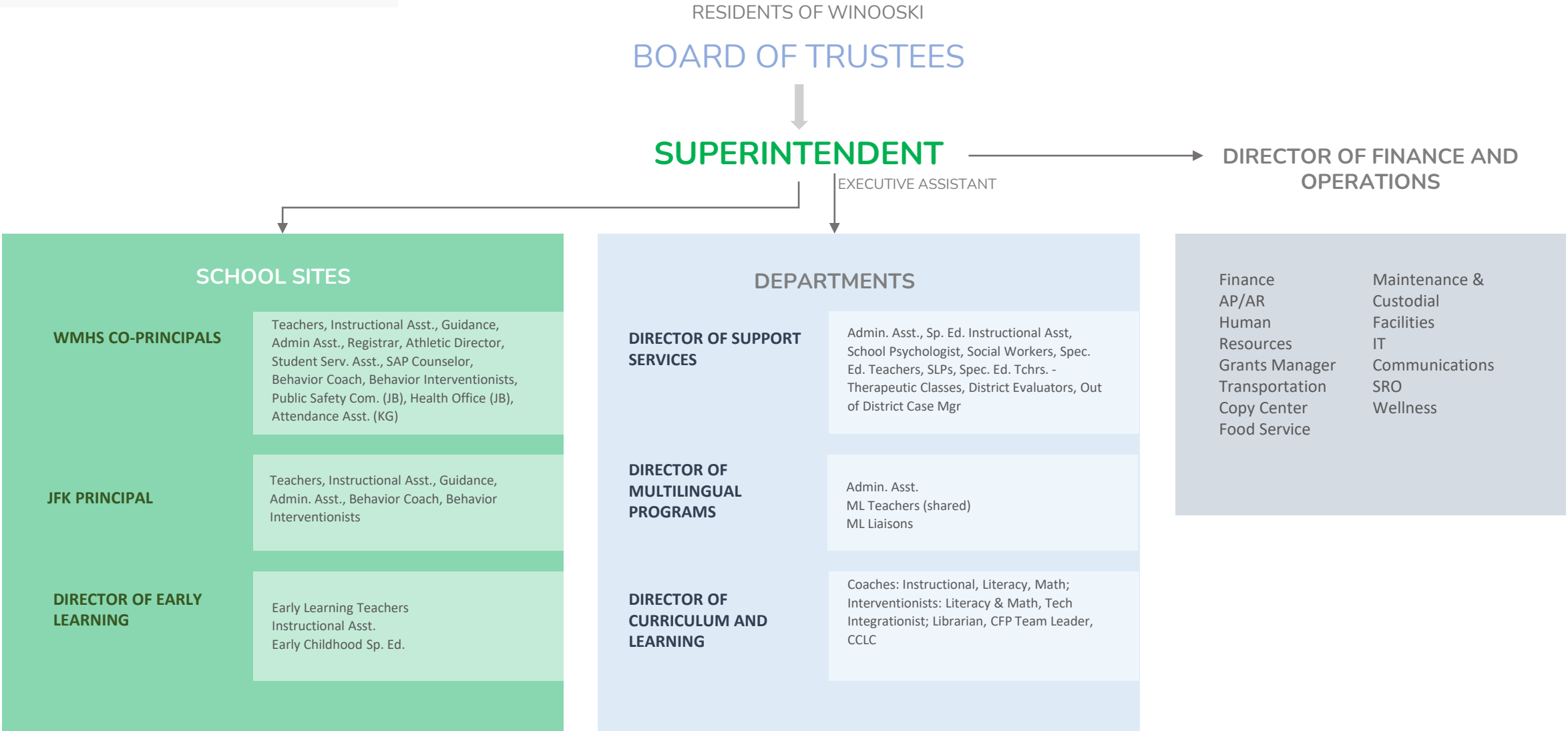
- The WSD will continuously improve its curriculum, instructional design, assessments and systems of support to benefit all learners.
- **The WSD is committed to providing an equitable and antiracist learning environment for all.**
 - The WSD will collaboratively support our students, staff, and families by being a proactive, nurturing space that values growth, wellness, and personal empowerment.



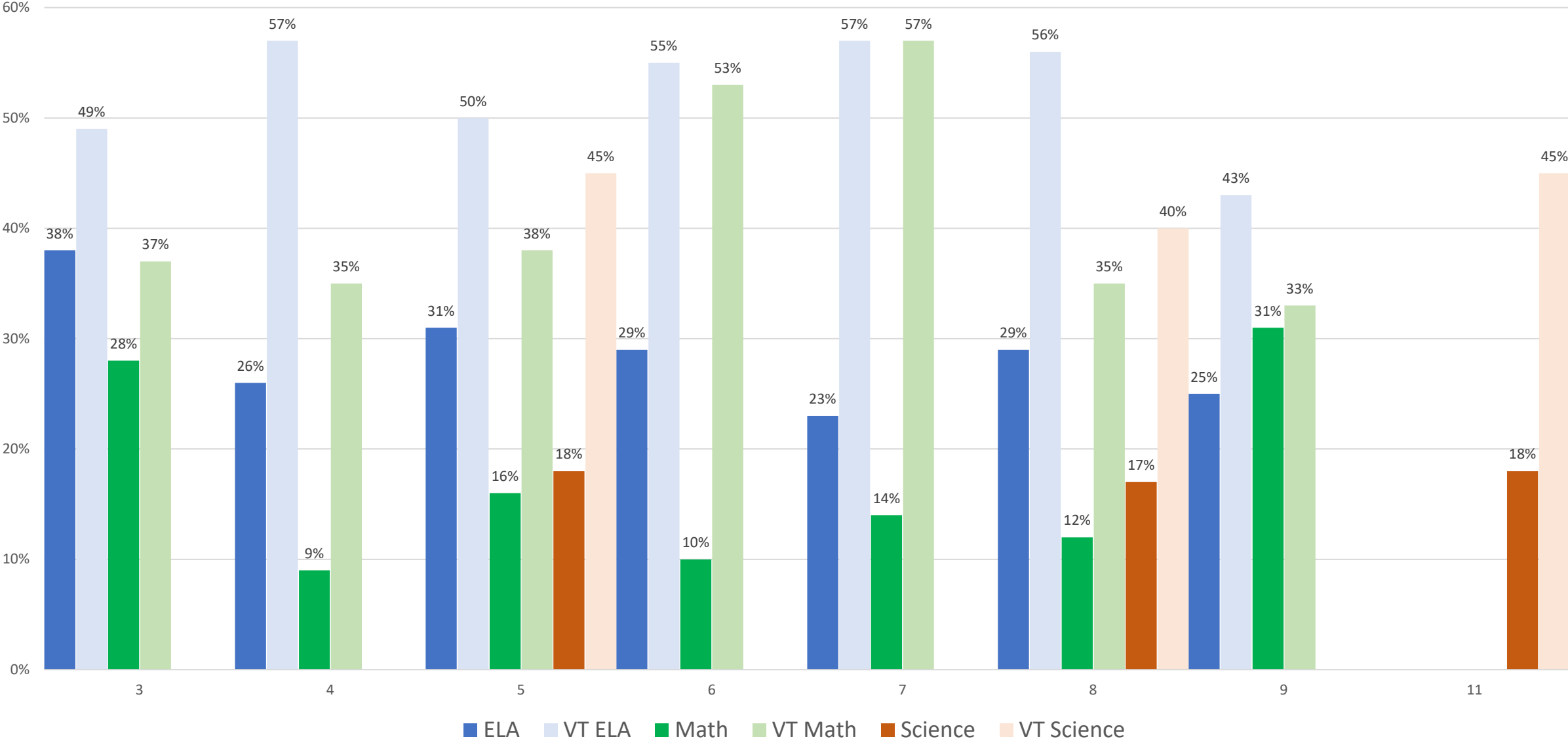
OUR STUDENTS

- **763** Total Students
- **92** pre-K students
- **315** K-5 students
- **35%** receive Multilingual services
- **61%** identify as BIPOC
- **219** students qualify for Special Education

WSD ORGANIZATIONAL CHART



VERMONT COMPREHENSIVE ASSESSMENT PROGRAM



YOUTH RISK ASSESSMENT SURVEY HIGHLIGHTS

HIGH SCHOOL

	VT %	WHS %	Difference
• Were in a physical fight	16	21	31%
• Ever saw someone get physically attacked, beaten, stabbed, or shot in their neighborhood	16	25	56%
• Rarely or never wore a bicycle helmet	47	58	23%
• Were obese	14	26	86%
• Did not participate in at least 60 minutes of physical activity on at least 1 day	13	29	123%
• Drank a bottle or glass of plain water one or more times per day	77	60	-22%
• Reported that there is at least one teacher or other adult in their school that they can talk to if they have a problem	70	63	-10%

YOUTH RISK ASSESSMENT SURVEY HIGHLIGHTS

MIDDLE SCHOOL

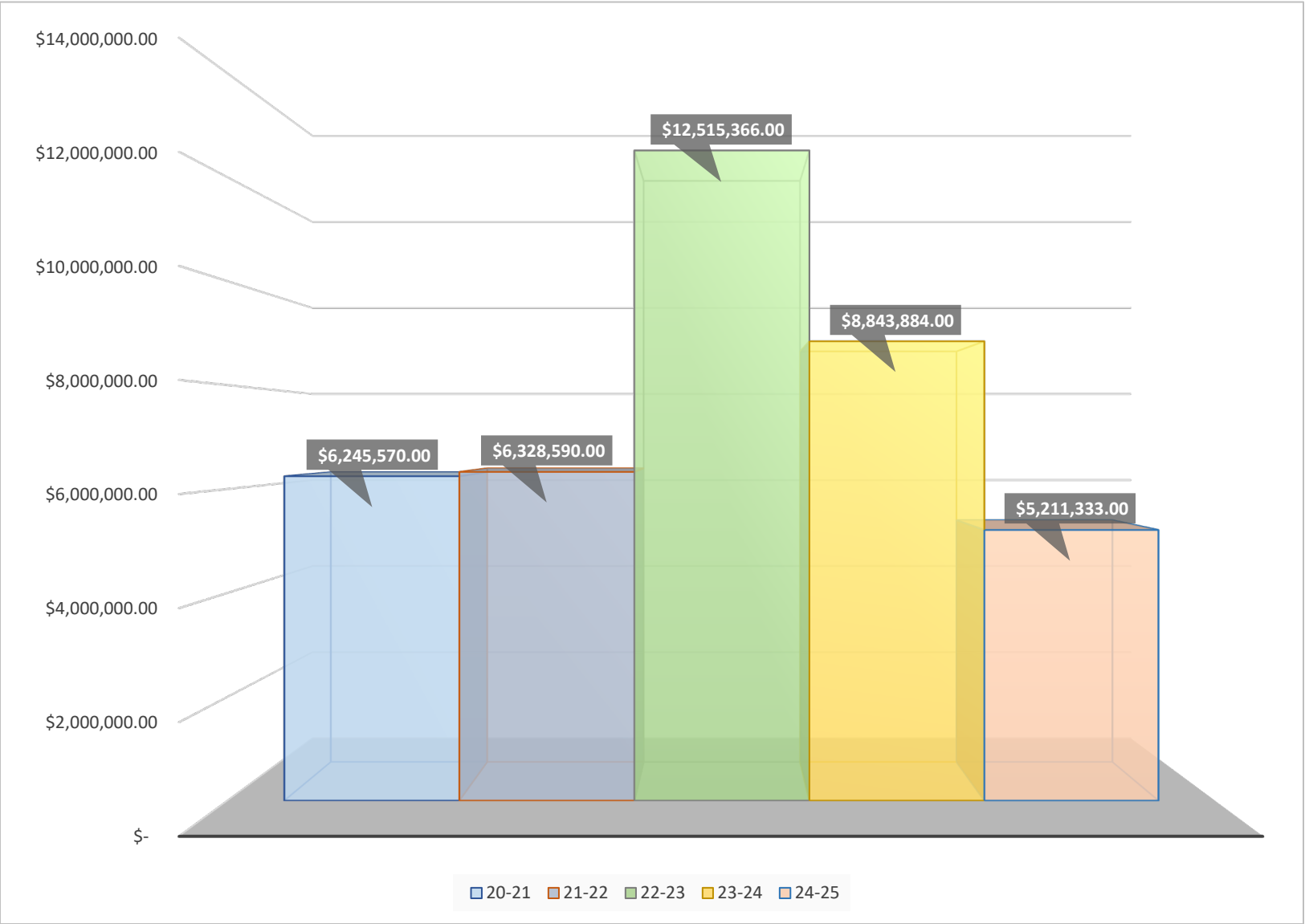
	VT %	WMS %	Difference
• Rarely or never wore a bicycle helmet	25	52	108%
• Were in a physical fight	38	46	21%
• Bullied someone	8	14	75%
• Spent 3 or more hours per day on screen time	57	65	14%
• Did not participate in at least 60 minutes of physical activity on at least 1 day	9	30	233%
• Did not drink a bottle or glass of plain water at all	3	8	167%
• Most of the time or always feel that they are able to talk to an adult in their family or another caring adult about their feelings	59	45	-24%
• Strongly agree or agree that in their community they feel like they matter to people	55	47	-15%

REVENUES

There are major factors affecting revenues in FY 2025, including a projected decrease in Special Education Census Block Grant and no ESSER funds.

The total projected decrease is \$3,632,551.00 or 41% in offsetting revenue in a single year.

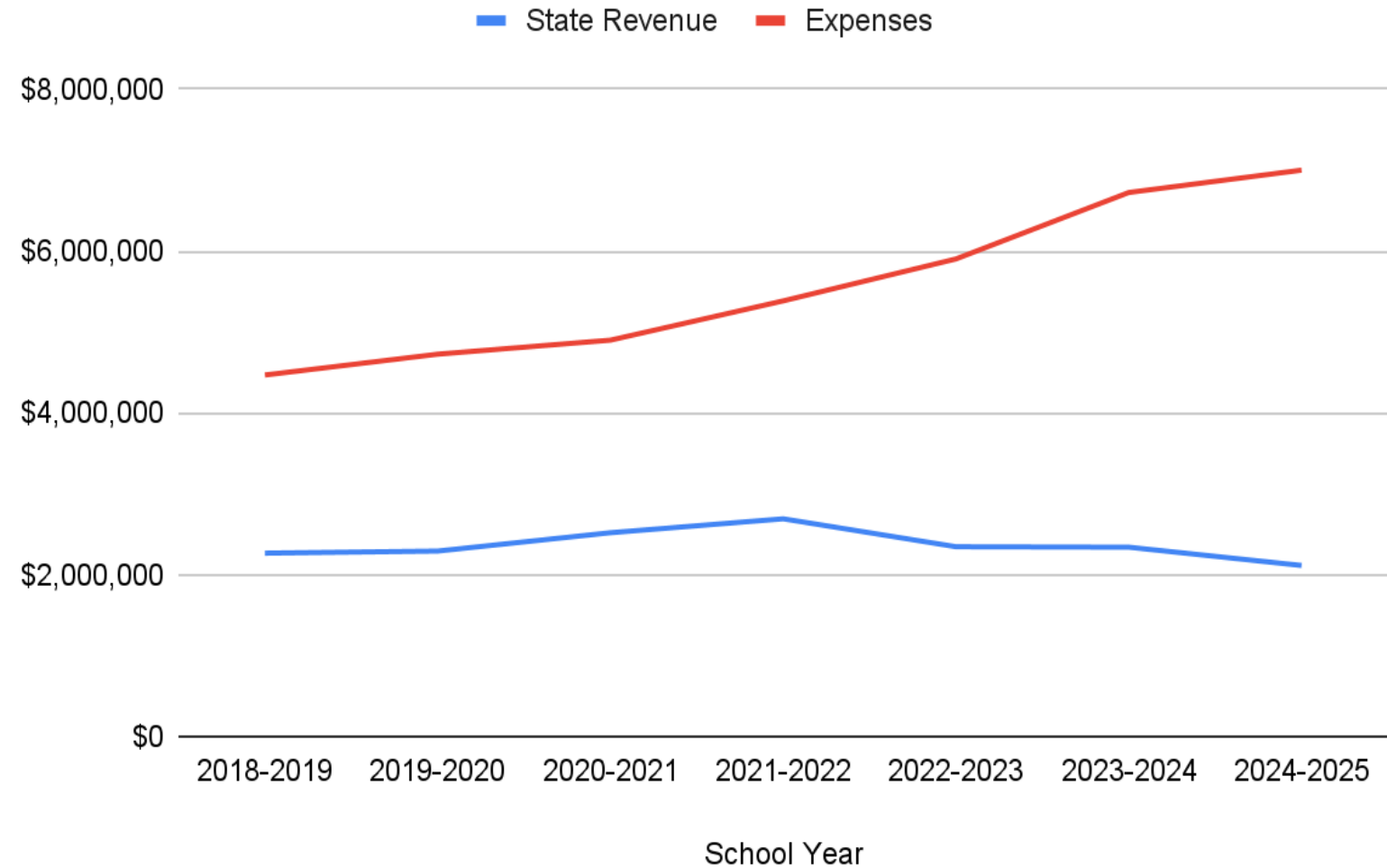
The sources of revenues have varied from year to year recently and the total decrease is an aggregate.



SPECIAL EDUCATION REVENUE

Act 173 moved away from reimbursements for special education costs to a block grant based on the total number of students in a school district.

This has resulted in a **loss of revenue to WSD to cover increasing special education costs.**



ADOPTED BUDGET

			Probable Tax Rate Impact	
Total Local Budget	Additions	Cuts	Equalized Homestead Tax Rate	Actual Homestead Tax Rate (AFTER CLA)
\$31,970,907	YES	NO	Likely to decrease (≈4%)	Likely to decrease (≈35%)

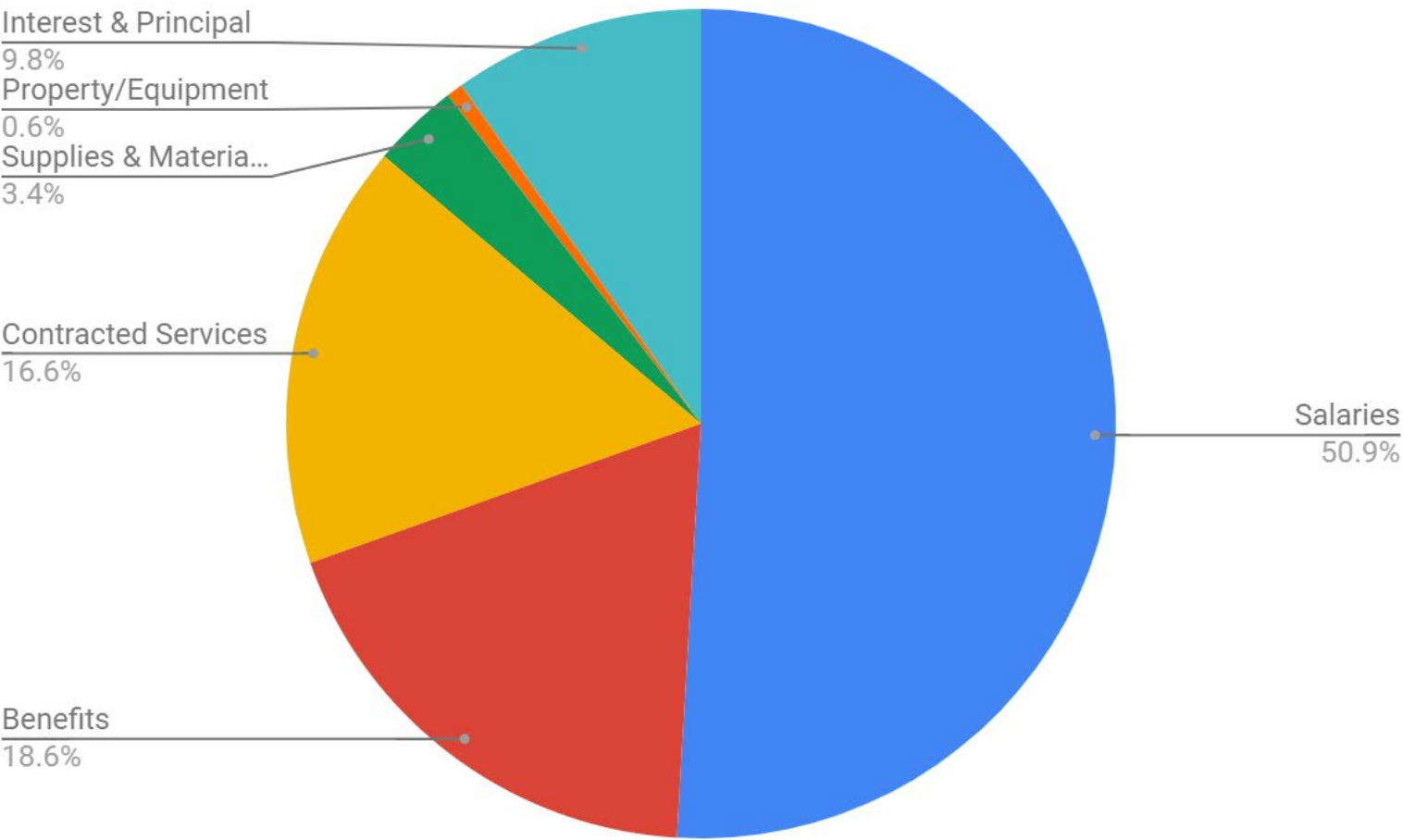
- Forecasted CLA: **101%**
- Estimated WLTM: **2,167**
- Forecasted Yield: **\$9,452**

What this budget allows:

- **A significant expansion** of Pre-Kindergarten services, which includes habilitating 2 new classrooms and making Pre-K available to all eligible 4-year-olds in Winooski.
- **The incorporation of the majority** of ESSER-funded investments that already exist in the district, including staff positions and contracted services. This would prevent disruptive or excessive reduction in force in a single year.
- **Meeting the budgetary demands** hard to control, such as insurance costs and negotiated salaries for staff.
- **The honoring of previous commitments** such as the funding of equity and anti-racism initiatives in the district and the addition of a School Safety Coach.
- **Other high importance additions** or maintenance such as one teacher in JFK to meet planning time obligations under the CBA; maintaining the Flexible Pathways Coordinator position at the high school; adding 10K to each school for classroom budgets; bringing some ML liaisons to year-round if needed; and increasing the “Community” line.

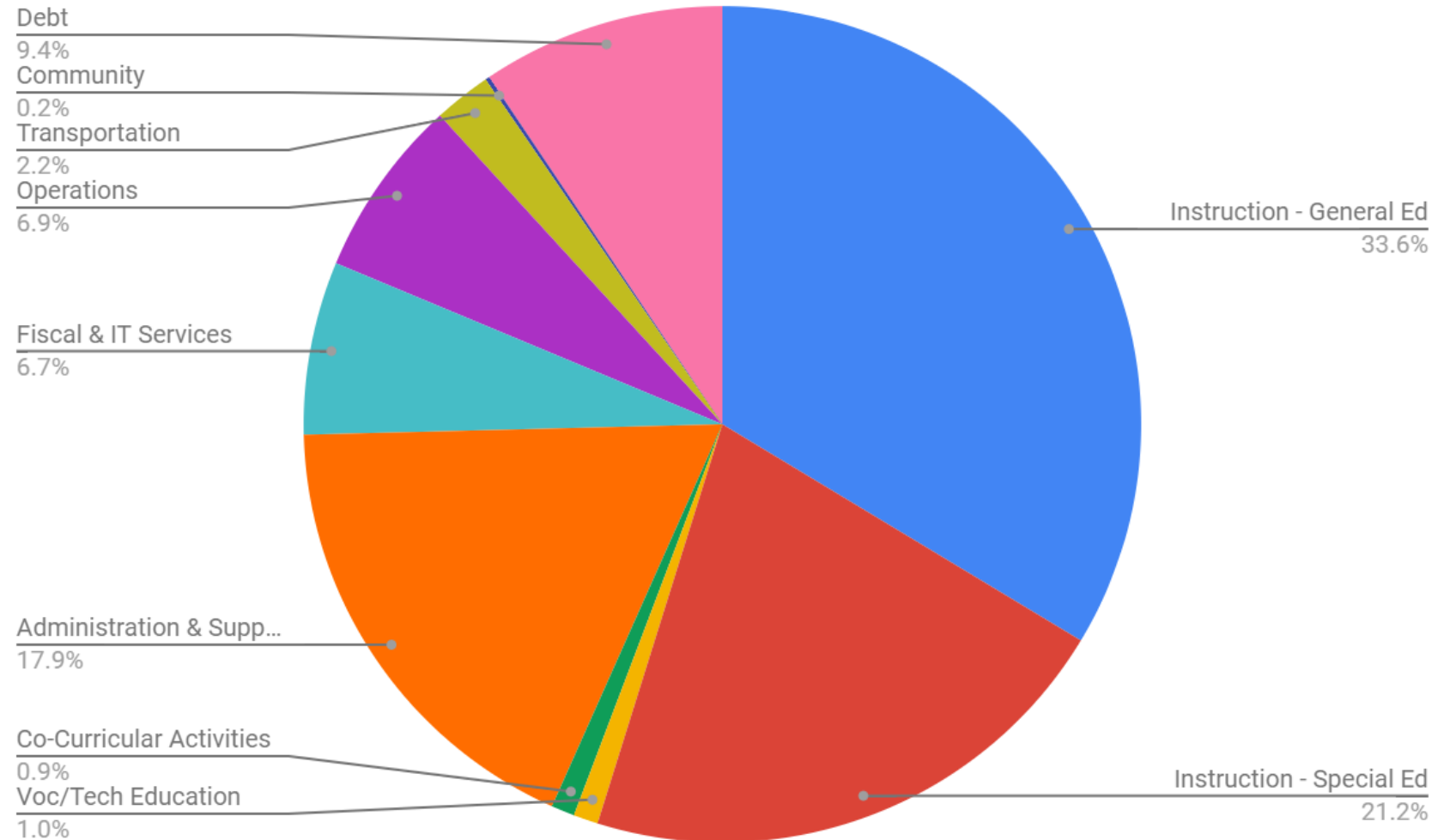
WSD FY 25 Investments by Object

Total Proposed Operating Budget \$31,970,907



Total Proposed Operating Budget **\$31,970,907**

WSD FY 25 Investments by Function



SCHOOL OPERATING BUDGET

	FY 2024	FY2025	Difference	
Budget	\$25,447,670	\$31,970,907	+ \$6,523,237	26%
Weighted Pupils*	900	2,167	+ 1,267	141%
Spending per pupil	\$23,034	\$13,462	- 9,572	-42%
Homestead Tax Rate*	2.16	1.41	- .75	-35%

- *Pupil counts are not calculated under the same formula. Act 127 changed the way we count in 2025.
- *Homestead Tax calculation is based on a CLA of 69 for last year and 101 for this year.

ACT 127

Sec. 2. GOALS (1)

The legislation is designed to...Increase educational equity by ensuring that the financial resources available to local school districts for educating students living in poverty, English learners, [...] and students in middle and high schools are sufficient...

Sec. 10. 16 V.S.A. § 4013 (b. 5-6)

Each school district shall (5) report expenditures on EL services annually to the Agency of Education...; and (6) evaluate the effectiveness of their EL programs...

ESTIMATING THE TAX RATE

Homestead Tax Rate: with a town's CLA and the Assessment Value of the property, this rate is used to calculate final tax liability.

Equalized
H.T.R.

=

\$29,171,428 / 2,167

9,452

Education Spending: Total budget approved by voters minus offsetting revenues.

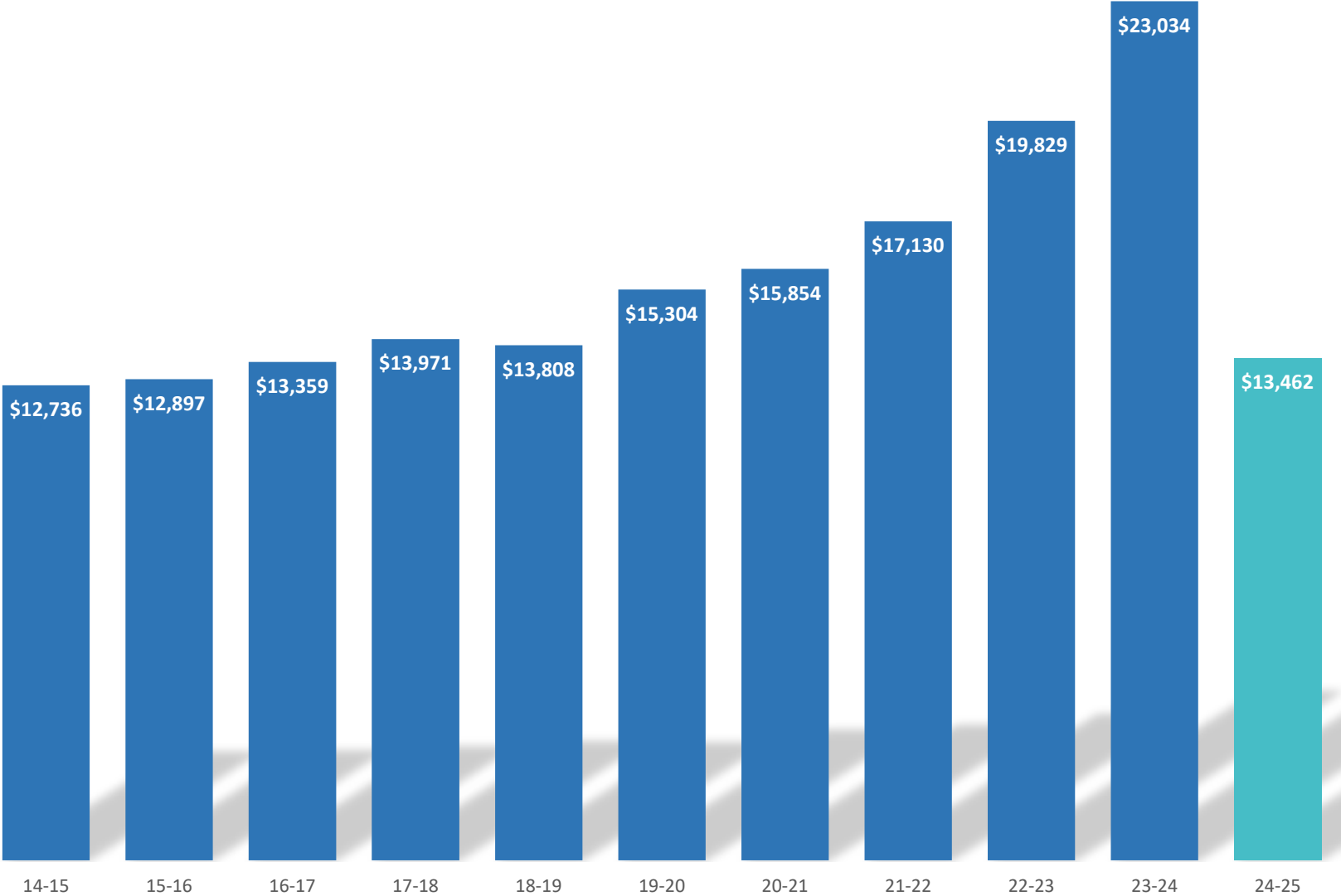
Weighted Long Term Membership: the average membership over two school years. Weights are added to this number to calculate **WLTM**.

Yield (Property Dollar Equivalent Yield): Set by the legislature: "the amount of **Per Pupil Education Spending** that would result if the **Homestead Tax Rate** were \$1.00 per \$100 of equalized education property value..."

FINALLY divide this result by CLA 101 to arrive at an Actual Homestead Tax Rate Estimate of: **1.41**

SPENDING PER EQUALIZED PUPIL

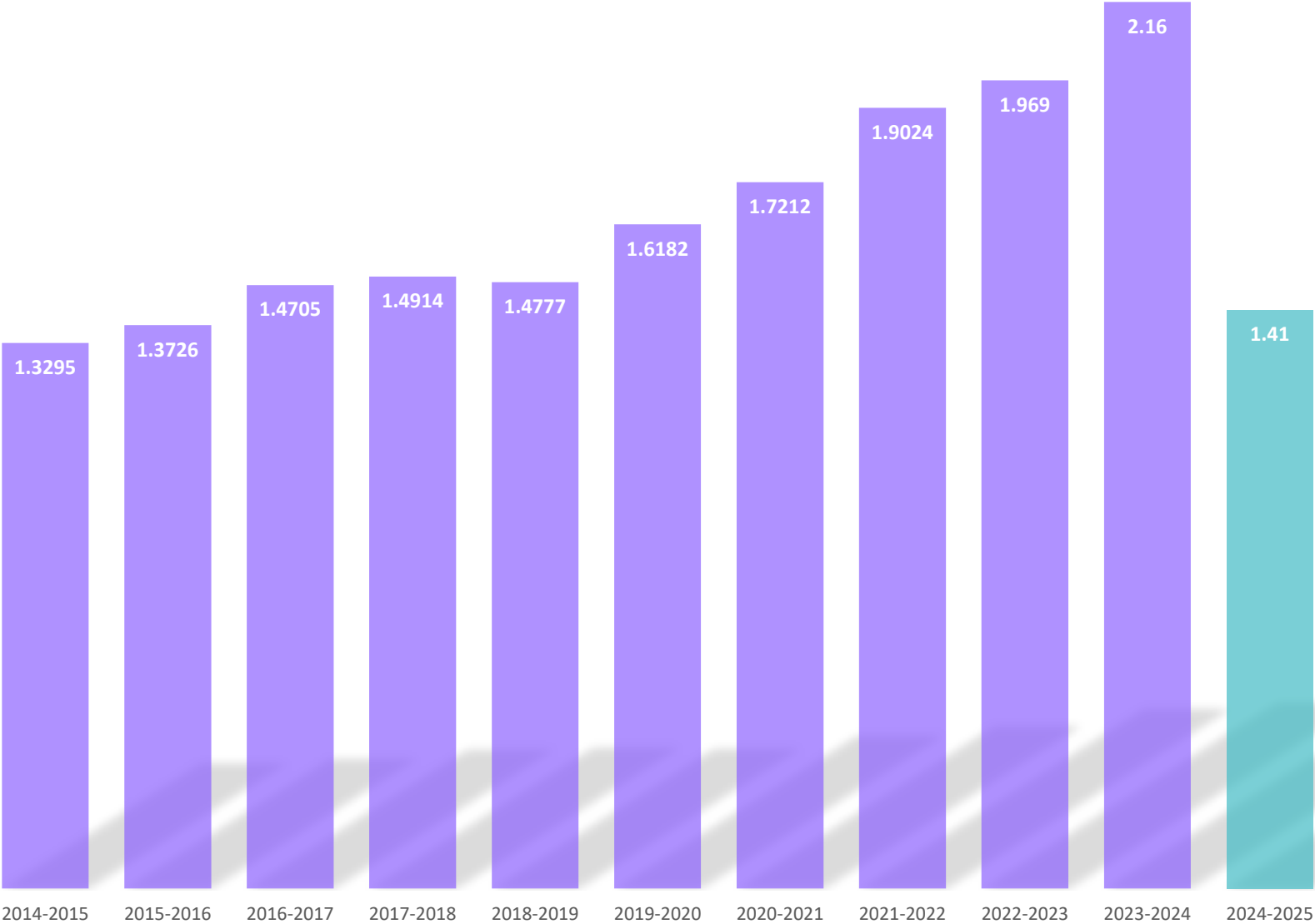
The term “Equalized Pupils” will be replaced by “Weighted Long Term Membership” starting in the upcoming fiscal year. The new calculations of spending will be based on the new weights and the spending is projected to appear smaller for all districts due to weight inflation.



HOMESTEAD TAX RATE AFTER CLA

Actual Homestead Tax Rates are calculated by using the district's Equalized Homestead Tax Rate (explained in a separate slide) and dividing it by the city's CLA.

This year's CLA is expected to increase significantly due to an updated total grand list value. However, this may have little impact in the final tax bill since the specific property's value will also be recalculated.



Impact of Proposed Tax Rates Without Tax Credits

The colored lines show the jump your property value has to realize in order to begin seeing an increase in your tax.

If your new appraised value is below that jump, you will pay less taxes than you currently do. If the jump is larger than the line shows, then your taxes will rise accordingly.

If the new CLA is more than 101, the Jump will be larger. The state has advised us to use an estimated CLA between 100 and 110.

	Assessed Property Value	FY 2024 tax (Current Budget)	FY 2025 tax (Proposed Budget)
	\$ 150,000	\$ 3,239	\$ 2,109
	\$ 175,000	\$ 3,779	\$ 2,460
	\$ 200,000	\$ 4,319	\$ 2,812
	\$ 225,000	\$ 4,859	\$ 3,163
	\$ 250,000	\$ 5,399	\$ 3,515
	\$ 275,000	\$ 5,938	\$ 3,866
	\$ 300,000	\$ 6,478	\$ 4,218
	\$ 325,000	\$ 7,018	\$ 4,569
	\$ 350,000	\$ 7,558	\$ 4,921
	\$ 375,000	\$ 8,098	\$ 5,272
	\$ 400,000	\$ 8,638	\$ 5,624
	\$ 425,000	\$ 9,178	\$ 5,975
	\$ 450,000	\$ 9,717	\$ 6,327
	\$ 475,000	\$ 10,257	\$ 6,678
	\$ 500,000	\$ 10,797	\$ 7,030
	\$ 525,000	\$ 11,337	\$ 7,381
	\$ 550,000	\$ 11,877	\$ 7,733
	\$ 575,000	\$ 12,417	\$ 8,084
	\$ 600,000	\$ 12,957	\$ 8,436
	\$ 625,000	\$ 13,496	\$ 8,787
	\$ 650,000	\$ 14,036	\$ 9,139
	\$ 675,000	\$ 14,576	\$ 9,490
	\$ 700,000	\$ 15,116	\$ 9,842
	\$ 725,000	\$ 15,656	\$ 10,193
	\$ 750,000	\$ 16,196	\$ 10,545

Property Tax Credit

- If your adjusted gross household income is **less than \$128,000** you may be eligible for a reduction of your education property taxes. Please file Form HS-122/Schedule HI-144.
- Eligibility for property tax relief/credit is based on your household income, home value, and school tax rate, and will be applied to your 2024-25 tax bill. Renters may also be eligible.
- Residents with household income less than \$90,000 will see a credit calculated based solely on income.

For Residents with Less than \$90,000 in Household Income:

Impact of Proposed Tax Rates After Tax Credits						
Household Income	FY 2023	FY 2024 (Current Budget)	FY 2025 (Proposed Budget)	2023 - 2024 Change	2024 - 2025 Change	2024 - 2025 Monthly Change
\$ 40,000	\$ 996	\$ 1,048	\$ 1,044	\$ 52	\$ (4)	\$ (0.3)
\$ 50,000	\$ 1,245	\$ 1,310	\$ 1,305	\$ 65	\$ (5)	\$ (0.4)
\$ 60,000	\$ 1,494	\$ 1,572	\$ 1,566	\$ 78	\$ (6)	\$ (0.5)
\$ 70,000	\$ 1,743	\$ 1,834	\$ 1,827	\$ 91	\$ (7)	\$ (0.6)
\$ 80,000	\$ 1,992	\$ 2,096	\$ 2,088	\$ 104	\$ (8)	\$ (0.7)
\$ 90,000	\$ 2,241	\$ 2,358	\$ 2,349	\$ 117	\$ (9)	\$ (0.8)

YOU VOTE ON 2 BUDGETS

Federal Budget is \$2,669,825. This does not affect your local taxes.

WHAT IS IT?

- Title I - Helps districts with a high poverty rate
- Title IIA - Class size reduction & professional development
- Title III - English Language Learners
- IDEA – Supports children with disabilities
- Medicaid - Supports school wide initiatives
- Other – 21st Century (CCLC), Fresh Fruits & Vegetables, Tobacco Prevention,
- Homeless Education & Refugee/Immigrant grant

Please vote YES.

Caveats

- **The city-wide reappraisal will mean new property values** for all city properties. The schools are not authorized nor able to provide estimated changes in value to individual properties. The reappraisal company working for the city has been invited to answer questions on February 15 at 6 PM at the school.
- **The tax rate information presented here is estimated** based on the current information provided by the state;
- The Vermont Homestead Tax Rate and Property Dollar Equivalent **Yield are subject to revision** by the legislature.
- **The CLA of 101 is within** the Department of Taxes' recommended range of 100-110, but we will not be notified of a final number **until the summer.**
- Please call your representatives if you have an opinion regarding Educational Funding and taxes in Vermont:
 - Taylor Small – 391-0569
 - Daisy Berbeco– 828-2228
 - Speaker of the House, Jill Krowinski – 828-2245
 - Governor Phil Scott – 828-3333

Contact a school board member:

- Steven Berbeco: sberbeco@wsdvt.org
- Robert Millar: rmillar@wsdvt.org
- Nicole Mace: nimace@wsdvt.org
- Isaiah Donaldson: idonaldson@wsdvt.org
- Kamal Dahal: kdahal@wsdvt.org

The WSD Budget Flyer will be mailed to all homes and is available at:

- www.wsdvt.org/school-board/budget/

The Annual Report is available at:

- www.wsdvt.org/school-board/budget/
- School, City Hall, Library

Upcoming Events

City and WSD Budget Presentation:

- Date: February 19, 2024
- Place: O'Brien Community Center
- Time: 5:00 pm

Annual Meeting

- Date: March 4, 2024
- Place: Performing Arts Center, Winooski Schools
- Time: 6:00 pm

Voting:

- Date: March 5, 2024
- Place: Winooski Senior Center
- Time: 7am – 7pm
- Voters may contact the Clerk's Office for an early ballot: 802-655-6410 or email clerk@winooski.vt.gov



VOTE!