



**Winooski School District
Winooski, VT**

2022-23 Enrollment Projection Report

Table of Contents

Section	Page
Enrollment Summary.....	1
Historical Enrollment Table.....	2
Historical Enrollment Graph.....	3
Projected Enrollment Table.....	4
Projected Enrollment Graph.....	5
Historical & Projected Enrollment Graph.....	6
Historical & Projected Enrollment in Grade Combinations Line Graph.....	7
Historical & Projected Enrollment in Grade Combinations Stacked Column Graph.....	8
Birth to Kindergarten Relationship Graph.....	9
Additional Information	10
New England's PK-12 Enrollment Trends.....	11
Reliability and Use of this Document	12

Enrollment Summary

The global pandemic continues to influence our nation's public health and economic stability in unpredictable ways. As such, it is still too early to identify many of the factors that could impact school enrollments. Over the past school year, we have seen fluctuations in the real estate market and job trends, which have impacted student attendance patterns. Moreover, during the past school year, we have seen how school enrollment patterns can differ substantially from one district to another, with some districts losing students while others experience an influx of students.

We are pleased to send you this report displaying the past, present, and projected enrollments for the District. These ten-year projections are designed to provide the District with yearly, up-to-date enrollment information that can be used by boards and administrators for effective planning and allocation of resources. Included in this report are graphs representing historical and projected grade-by-grade enrollments, as well as historical and projected enrollments in grade combinations. We have received the figures given to us by the District, and we assume that the method of collecting the enrollment data has been consistent from year to year.

Enrollment projections are more reliable in Years #1-4 in the future and less reliable in the "out-years." Projections six to ten years out may serve as a guide to future enrollments and are useful for planning purposes. In light of this, NESDEC has added a "Second Semester refresher" enrollment projection at no cost to affiliates. (For more information, please refer to the Reliability and Use of This Document section).

The NESDEC enrollment projection fell within 7 students of the K-12 total, 693 students projected vs. 686 enrolled.

Births decreased by -29 from a previous ten-year average of 106 to a projected average of 77 which could have an impact on Kindergarten enrollments. In most districts, Grades 1-8 are very stable in enrollments. However, there have been declines in 6 of the 8 most recent years, leading to a net decline averaging -9 students per year.

Over the next three years, K-5 enrollments are projected to decrease by -41 students, Grades 6-8 enrollments are projected to decrease by -7 students, and Grades 9-12 enrollments are projected to decrease by -25 students, as students move through the grades.

Historical Enrollment

School District: Winooski, VT

10/24/2022

Historical Enrollment By Grade																			
Birth Year	Births*	School Year	PK	K	1	2	3	4	5	6	7	8	9	10	11	12	UNGR	K-12	PK-12
2007	88	2012-13	93	65	69	55	63	61	63	50	61	44	60	48	66	66	35	806	899
2008	130	2013-14	57	69	58	57	55	54	54	55	46	56	41	67	46	40	30	728	785
2009	101	2014-15	57	69	58	57	55	54	54	55	46	56	41	67	46	40	30	728	785
2010	97	2015-16	115	48	63	65	63	60	52	53	56	52	56	56	45	27	56	752	867
2011	106	2016-17	114	58	51	65	66	64	59	55	53	59	61	58	59	48	0	756	870
2012	124	2017-18	106	69	65	60	61	62	52	53	60	47	66	73	54	61	0	783	889
2013	120	2018-19	118	63	70	64	56	51	64	52	60	55	48	61	59	44	0	747	865
2014	102	2019-20	104	64	57	62	62	58	49	61	52	55	52	54	47	52	0	725	829
2015	91	2020-21	68	69	60	58	57	59	51	47	59	48	57	58	48	57	0	728	796
2016	96	2021-22	62	63	65	55	59	57	55	48	44	62	42	58	55	50	0	713	775
2017	81	2022-23	86	51	61	59	54	53	52	51	43	45	57	44	54	62	0	686	772

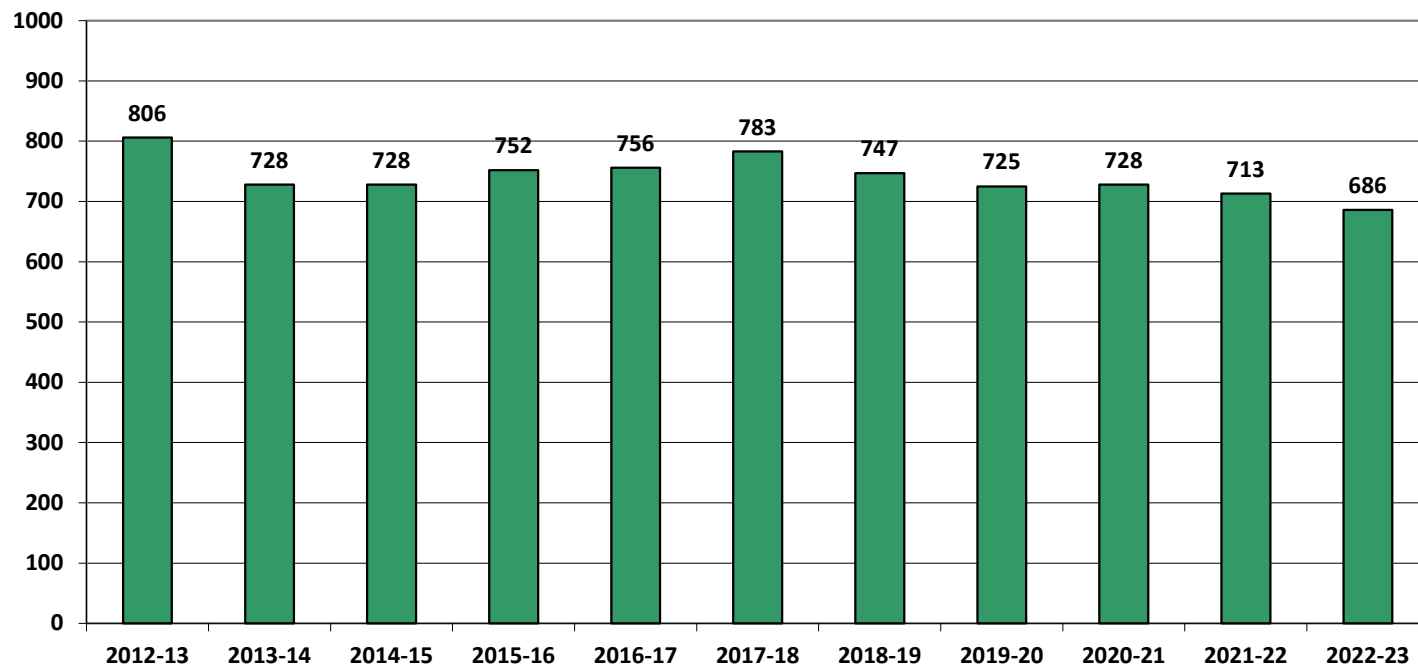
*Birth data provided by Public Health Vital Records Departments in each state.

Historical Enrollment in Grade Combinations									
Year	PK-5	K-5	K-6	K-8	5-8	6-8	7-8	7-12	9-12
2012-13	469	376	426	531	218	155	105	345	240
2013-14	404	347	402	504	211	157	102	296	194
2014-15	404	347	402	504	211	157	102	296	194
2015-16	466	351	404	512	213	161	108	292	184
2016-17	477	363	418	530	226	167	112	338	226
2017-18	475	369	422	529	212	160	107	361	254
2018-19	486	368	420	535	231	167	115	327	212
2019-20	456	352	413	520	217	168	107	312	205
2020-21	422	354	401	508	205	154	107	327	220
2021-22	416	354	402	508	209	154	106	311	205
2022-23	416	330	381	469	191	139	88	305	217

Historical Percentage Changes			
Year	K-12	Diff.	%
2012-13	806	0	0.0%
2013-14	728	-78	-9.7%
2014-15	728	0	0.0%
2015-16	752	24	3.3%
2016-17	756	4	0.5%
2017-18	783	27	3.6%
2018-19	747	-36	-4.6%
2019-20	725	-22	-2.9%
2020-21	728	3	0.4%
2021-22	713	-15	-2.1%
2022-23	686	-27	-3.8%
Change	-120		-14.9%

Historical Enrollment

K-12, School Years 2012-13 to 2022-23



Projected Enrollment

School District: Winooski, VT

10/24/2022

Enrollment Projections By Grade*																				
Birth Year	Births*		School Year	PK	K	1	2	3	4	5	6	7	8	9	10	11	12	UNGR	K-12	PK-12
2017	81		2022-23	86	51	61	59	54	53	52	51	43	45	57	44	54	62	0	686	772
2018	76		2023-24	88	51	48	57	57	52	48	49	48	43	42	61	40	59	0	655	743
2019	70		2024-25	90	47	48	45	55	55	47	45	46	48	41	45	56	44	0	622	712
2020	77	(prov.)	2025-26	92	52	45	45	44	53	50	44	42	46	45	44	41	62	0	613	705
2021	80	(est.)	2026-27	94	54	49	42	44	43	48	47	41	42	43	48	40	45	0	586	680
2022	77	(est.)	2027-28	96	51	51	46	41	43	39	45	44	41	40	46	44	44	0	575	671
2023	76	(est.)	2028-29	98	51	48	48	45	40	39	37	42	44	39	43	42	48	0	566	664
2024	76	(est.)	2029-30	100	51	48	45	47	44	36	37	35	42	42	42	39	46	0	554	654
2025	77	(est.)	2030-31	102	52	48	45	44	46	40	34	35	35	40	45	38	43	0	545	647
2026	77	(est.)	2031-32	104	52	49	45	44	43	42	38	32	35	33	43	41	42	0	539	643
2027	77	(est.)	2032-33	106	51	49	46	44	43	39	40	36	32	33	35	39	45	0	532	638

Note: Ungraded students (UNGR) often are high school students whose anticipated years of graduation are unknown, or students with special needs - UNGR not included in Grade Combinations for 7-12, 9-12, etc.

Based on an estimate of births Based on children already born Based on students already enrolled

*Birth data provided by Public Health Vital Records Departments in each state.

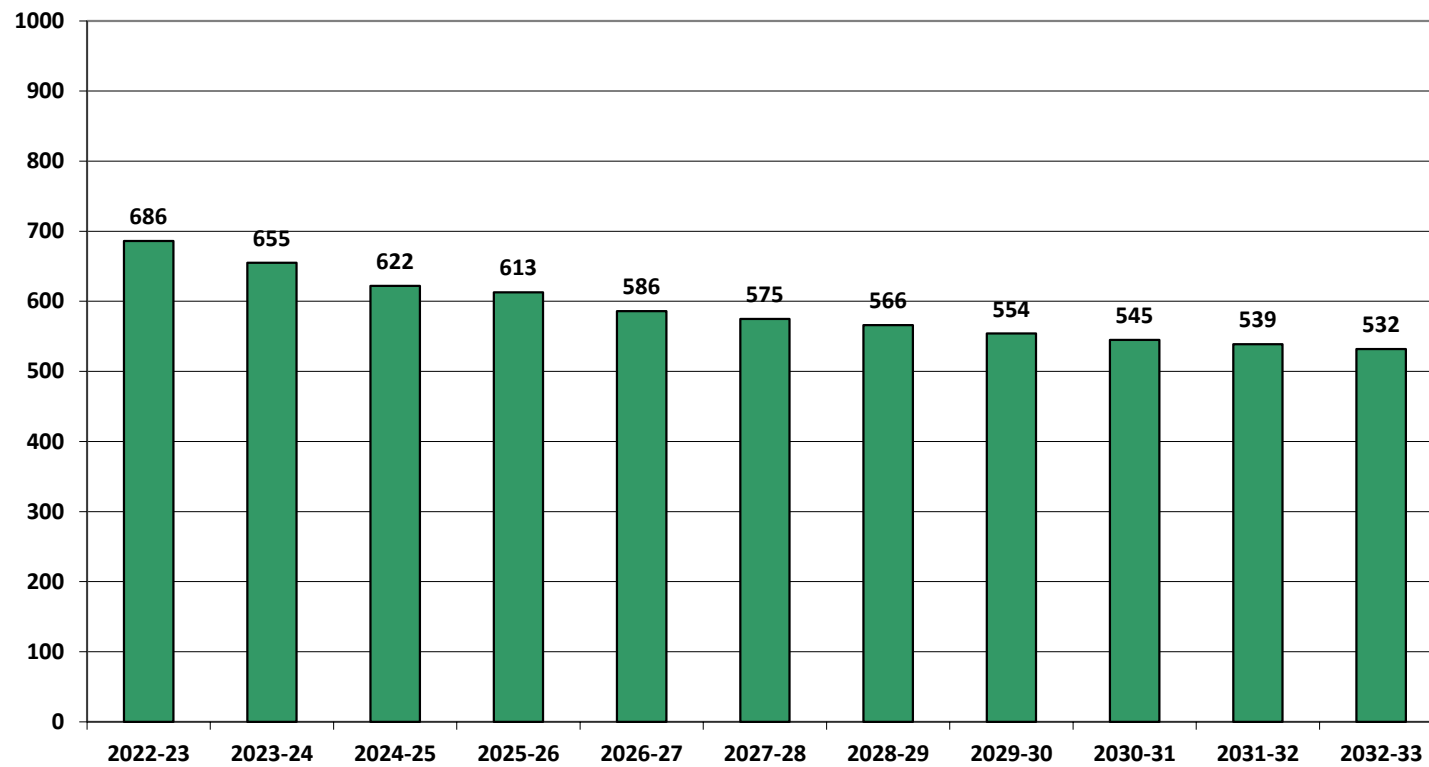
Projected Enrollment in Grade Combinations*									
Year	PK-5	K-5	K-6	K-8	5-8	6-8	7-8	7-12	9-12
2022-23	416	330	381	469	191	139	88	305	217
2023-24	401	313	362	453	188	140	91	293	202
2024-25	387	297	342	436	186	139	94	280	186
2025-26	381	289	333	421	182	132	88	280	192
2026-27	374	280	327	410	178	130	83	259	176
2027-28	367	271	316	401	169	130	85	259	174
2028-29	369	271	308	394	162	123	86	258	172
2029-30	371	271	308	385	150	114	77	246	169
2030-31	377	275	309	379	144	104	70	236	166
2031-32	379	275	313	380	147	105	67	226	159
2032-33	378	272	312	380	147	108	68	220	152

Projected Percentage Changes			
Year	K-12	Diff.	%
2022-23	686	0	0.0%
2023-24	655	-31	-4.5%
2024-25	622	-33	-5.0%
2025-26	613	-9	-1.4%
2026-27	586	-27	-4.4%
2027-28	575	-11	-1.9%
2028-29	566	-9	-1.6%
2029-30	554	-12	-2.1%
2030-31	545	-9	-1.6%
2031-32	539	-6	-1.1%
2032-33	532	-7	-1.3%
Change	-154		-22.4%

*Projections should be updated annually to reflect changes in in/out-migration of families, real estate sales, residential construction, births, and similar factors.

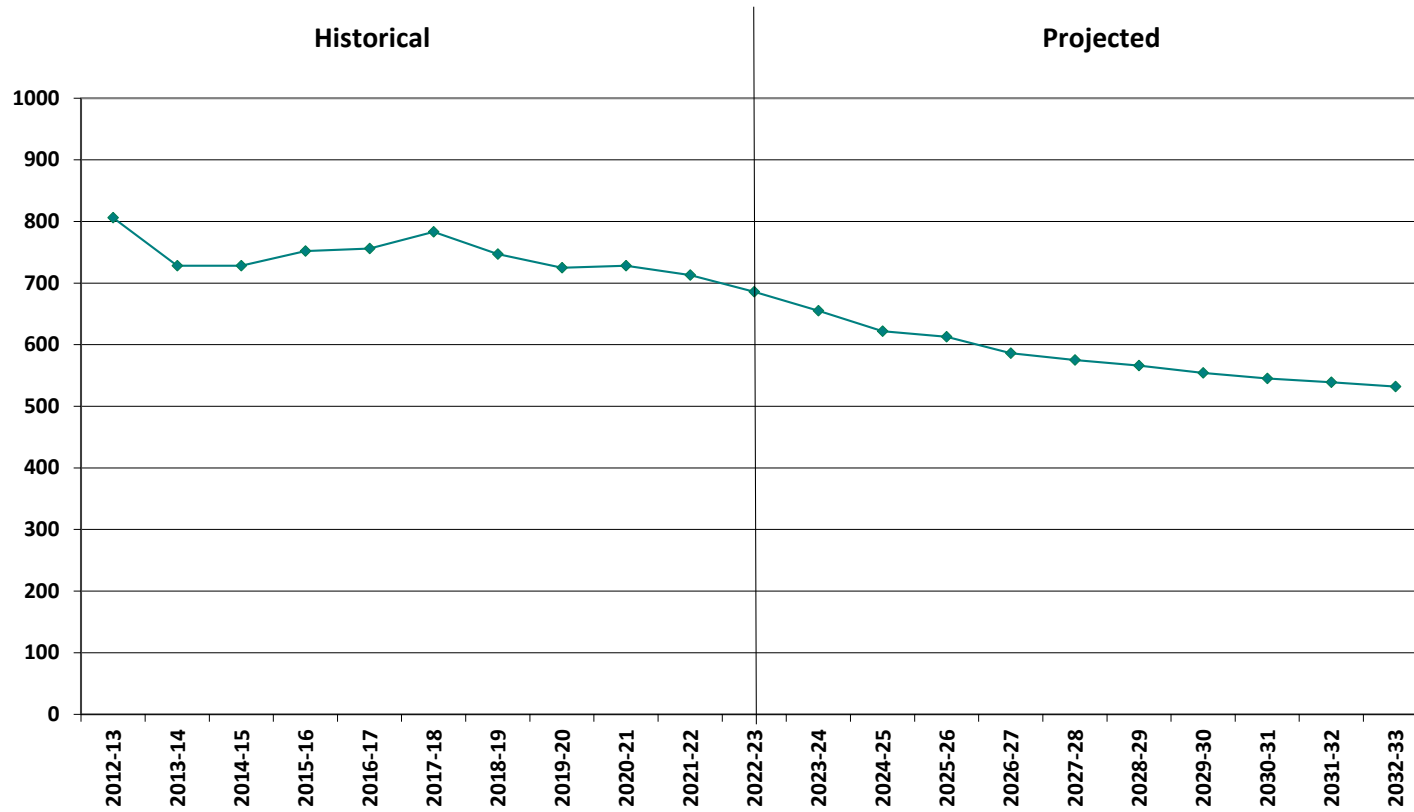
Projected Enrollment

K-12, School Years 2022-23 to 2032-33

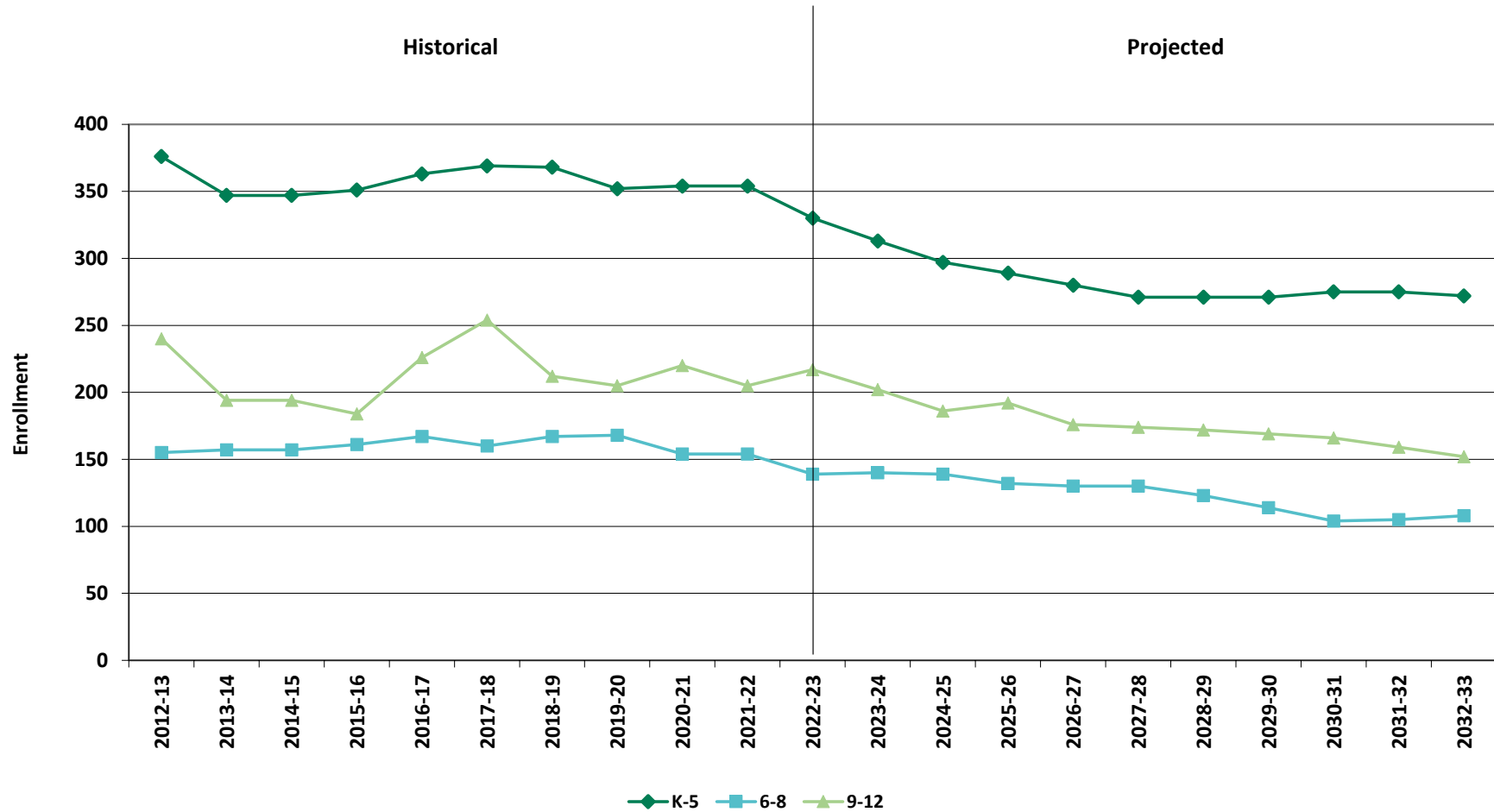


©New England School Development Council • 508-481-9444 • www.nesdec.org

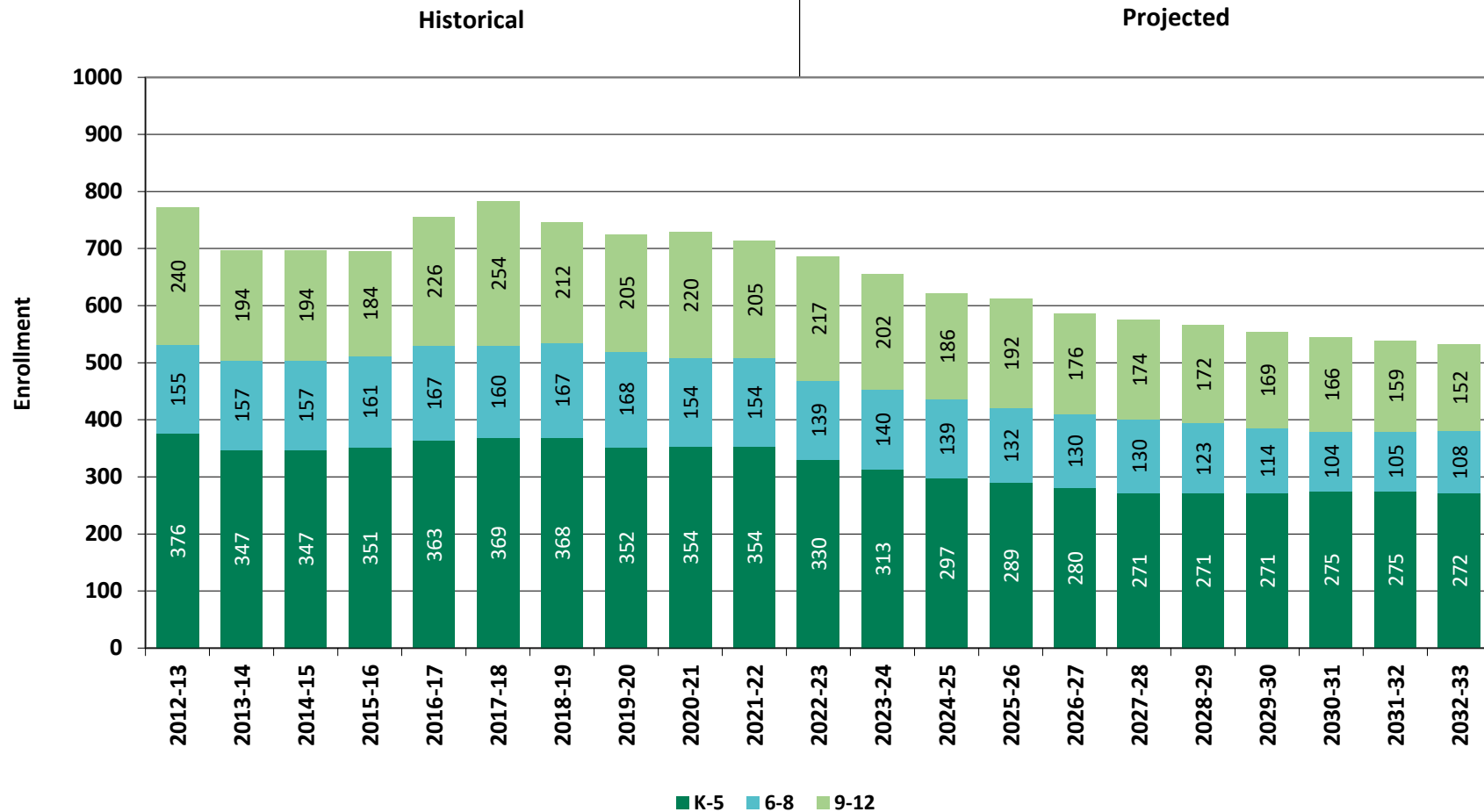
Historical & Projected Enrollment



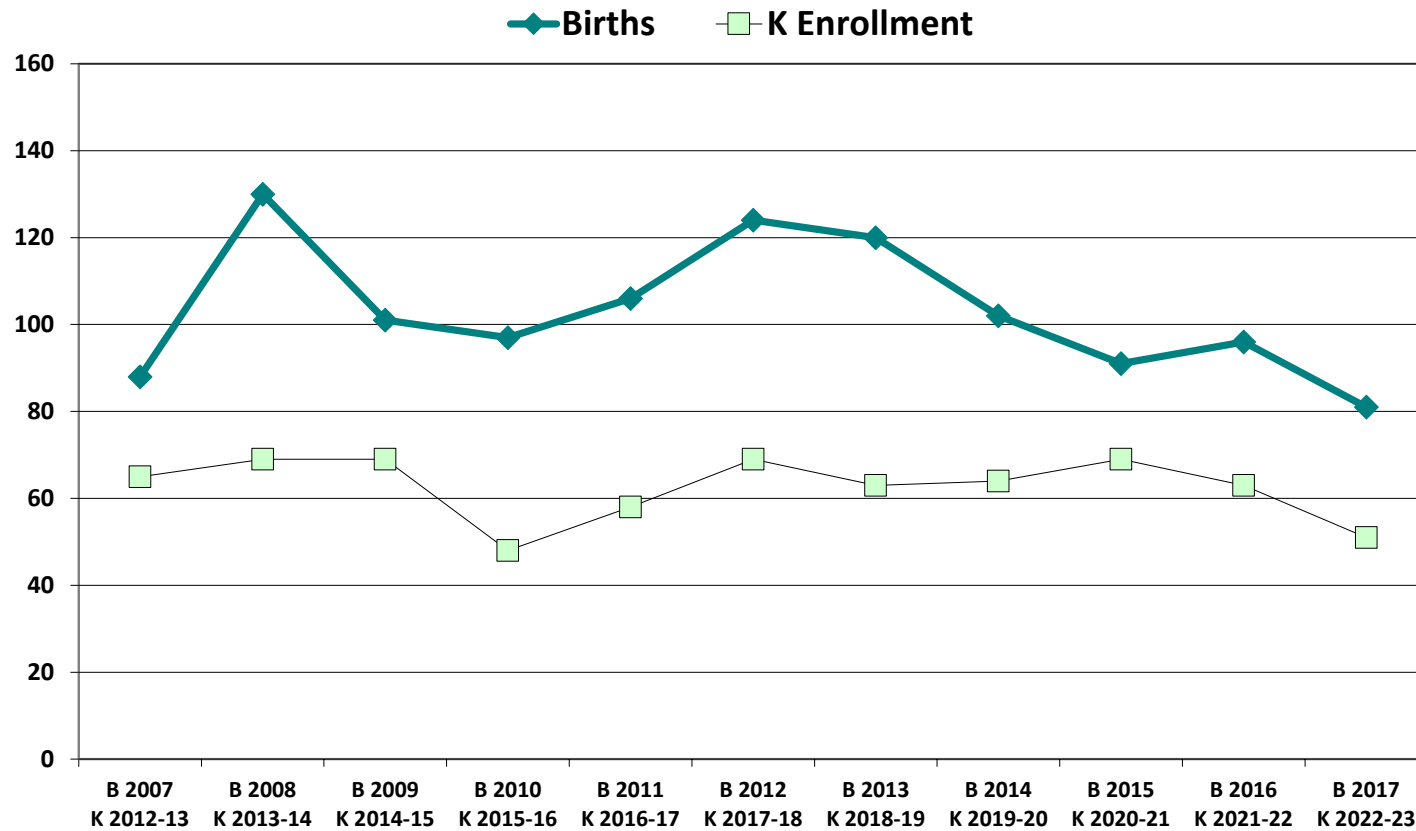
Historical & Projected Enrollments in Grade Combinations



Historical & Projected Enrollments in Grade Combinations



Birth-to-Kindergarten Relationship



Additional Information

Building Permits Issued (Source: HUD)		
Year	Single-Family	Multi-Units
2012	2	0
2018	1	68
2019	3	118
2020	4	188
2021	3	28
2022	1 to date	2 to date

Enrollment History*		
Year	Career-Tech 9-12 Total	Non-Public K-12 Total
2012-13	n/a	n/a
2018-19	n/a	38
2019-20	29	38
2020-21	27	24
2021-22	24	19
2022-23	20	18

Residents in Non-Public Independent and Parochial Schools (General Education)*														
Oct. 1 Enrollment	K	1	2	3	4	5	6	7	8	9	10	11	12	K-12 TOTAL
	2	2	2	1	2	0	4	2	3	0	0	0	0	18

K-12 Home-Schooled Students*	
2022	n/a

K-12 Residents in Charter or Magnet Schools, or Choiced-out*	
2022	7

K-12 Special Education Outplaced Students*	
2022	17

K-12 Tuitioned-In, Choiced-In, & Other Non-Residents*	
2022	n/a

*The above data were provided by the District, with the exception of building permit data (provided by HUD).

"n/a" signifies that information was not provided by District.

New England's PK-12 Enrollment Trends

From 2020 to 2030, the US Department of Education anticipates changes in PK-12 enrollment of -2.4% in the South, -6.5% in the West, -3.8% in the Midwest, -6.2% in the Northeast, and a total of -4.3% nationwide.

State	Fall 2020 PK - 12	Fall 2030 Projected	PK-12 Decline	% Change 2020-2030
CT	509,058	475,600	-33,458	-6.6%
ME	172,455	161,800	-10,655	-6.2%
MA	921,712	879,900	-41,812	-4.5%
NH	169,027	144,600	-24,427	-14.5%
RI	139,184	130,200	-8,984	-6.5%
VT	82,401	74,600	-7,801	-9.5%

Source: U.S. Department of Education, National Center for Education Statistics,
Enrollment In Public Schools fall 1990 to fall 2030 , Table 203.20, March 2022.

Although most New England Districts are seeing a decline in the number of births, NESDEC's experience indicates that the impact on enrollment varies from District to District. Almost half of New England Districts have been growing in PK-12 enrollment, and a similar number are declining (often in rural areas), with the other Districts remaining stable.

Reliability and Use of this Document

PROJECTION METHODOLOGY

Cohort component (survival) technique is a frequently used method of preparing enrollment forecasts. NESDEC uses this method, but modifies it in order to move away from forecasts that are wholly computer- or formula-driven. Such modification permits the incorporation of important, current district-specific information into the generation of enrollment forecasts (such as in/out-migration of students, resident births, HUD-reported building permits, etc.). Percentages are calculated from the historical enrollment data to determine a reliable percentage of increase or decrease in enrollment between any two grades. For example, if 100 students enrolled in Grade 1 in 2018-19 increased to 104 students in Grade 2 in 2019-20, the percentage of survival would be 104%, or a ratio of 1.04. Ratios are calculated between each pair of grades or years in school over several recent years.

After study and analysis of the historical ratios, and based upon a reasonable set of assumptions regarding births, migration rates, retention rates, etc., ratios most indicative of future growth patterns are determined for each pair of grades. The ratios thus selected are applied to the present enrollment statistics to project into future years. The ratios are the key factors in the reliability of the projections, assuming validity of the data at the starting point.

RELIABILITY OF ENROLLMENT PROJECTIONS

Projections can serve as useful guides to school administrators for educational planning. Enrollment projections are more reliable in Years #1-4 in the future and less reliable in the "out-years." Projections six to ten years out may serve as a guide to future enrollments and are useful for planning purposes, but they should be viewed as subject to change given the likelihood of potential shifts in underlying assumptions/trends, such as student migration, births as they relate to Kindergarten enrollment, and other factors.

Projections that are based upon **the children who already are in the district** (the current K-12 population only) will be the most reliable. The second level of reliability will be for those children already **born into the community but not yet old enough to be in school**. The least reliable category is the group for which an estimate must be made **to predict the number of births**, thereby adding additional uncertainty. See these three multi-colored groupings on the "Projected Enrollment" tab.

Annual updates allow for early identification of recent changes in historical trends. When the actual enrollment in a grade is significantly different (higher or lower) from the projected number, it is important (yet difficult) to determine whether this is a one-year aberration or whether a new trend may have begun. **In light of this possibility, NESDEC urges all school districts to have updated enrollment forecasts developed by NESDEC each October.** This service is available at no cost to affiliated school districts.

USING THIS INFORMATION ELECTRONICALLY

If you would like to extract the information contained in this report for your own documents or presentations, you can use screenshots, which can be inserted into PowerPoint slides, Word documents, etc. Because screenshots create graphics, the image is not editable. Please feel free to contact us if you need assistance in this matter, by phone (508-481-9444) or by email (ep@nesdec.org).