

Winooski School District FY 2016 Budget



Regular School Operating Budget

	<u>FY 2015</u>	<u>FY 2016</u>	<u>Difference</u>
<u>Budget</u>	\$13,419,758	\$14,022,224	4.49%
<u>Eq. Pupils</u>	896	925	3.24%
<u>Ed. Spending</u> <u>Per Student</u>	\$12,735	\$12,906	1.34%

WSD-ENDS STATEMENT

All students will graduate from the Winooski School District (WSD) **college and career ready** at a cost supported by a majority of the Winooski community. WSD students will lead **healthy, productive** and **successful lives** and engage with their **local and global community**.

WSD GRADUATE EXPECTATIONS

Critical Thinking and Problem Solving

Physical, Social, and Emotional Well-Being

Effective Oral and Written Communication

Engagement in Learning

Persistence

Cross-Cultural Understanding and Community Engagement

Goal #1: College & Career Readiness

- Project-Based Learning (PBL)
- Student-Centered Learning (SCL)
 - iLab
- Reading & Math Data
 - Growth: F & P, Reading Plus, Read 180, Lexia
- Math Best Practices
- Student Leadership: Board reps, Peace Jam, NEMF Leadership conf., Community Meetings, Aspirations Day

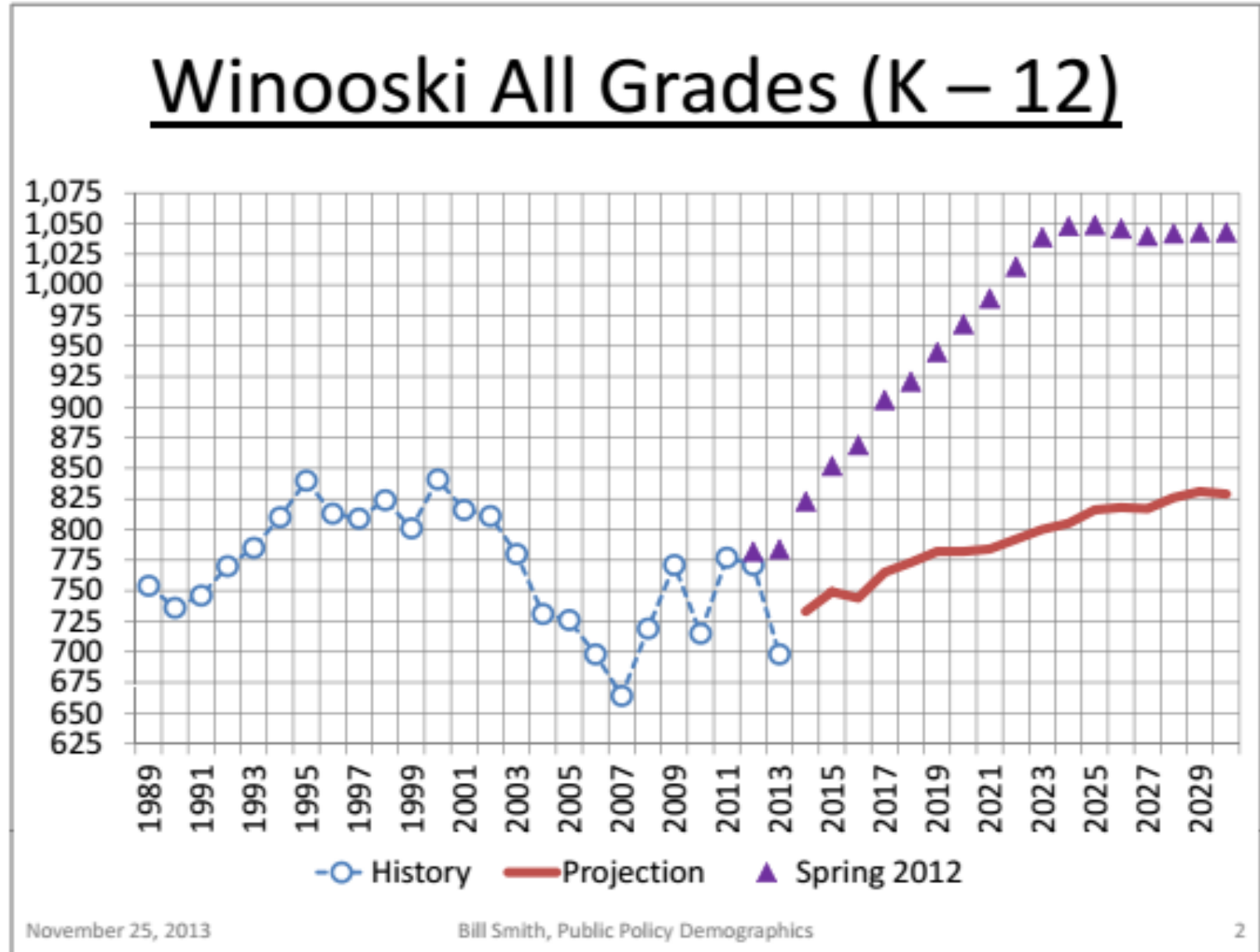
Goal #2: Healthy, Productive & Successful Lives

- Food Security
 - Community Eligibility Provision (CEP)
 - VT Foodbank & Backpack program
 - Fresh Fruits & Vegetables (FFV)
- Social Thinking & Success Counseling
- Mindfulness & Movement
- Community experiences

Goal #3: Local & Global Community Engagement

- Parent Engagement
 - Welcome Back to School BBQ
 - Interpretation Equipment
 - PACTS, PEP, PTO & Boosters
 - Learning Walks
- Local Engagement
 - Make A Difference Day
 - Special Olympics/Penguin Plunge
 - Act 148, Vermont's Universal Recycling Law
- Global Engagement

2012 Demographic Study w/ update



WSD-Current Enrollment

- Pre-kindergarten: 90
- K-5: 353
- 6-8: 154
- 9-12: 219

TOTAL: 816

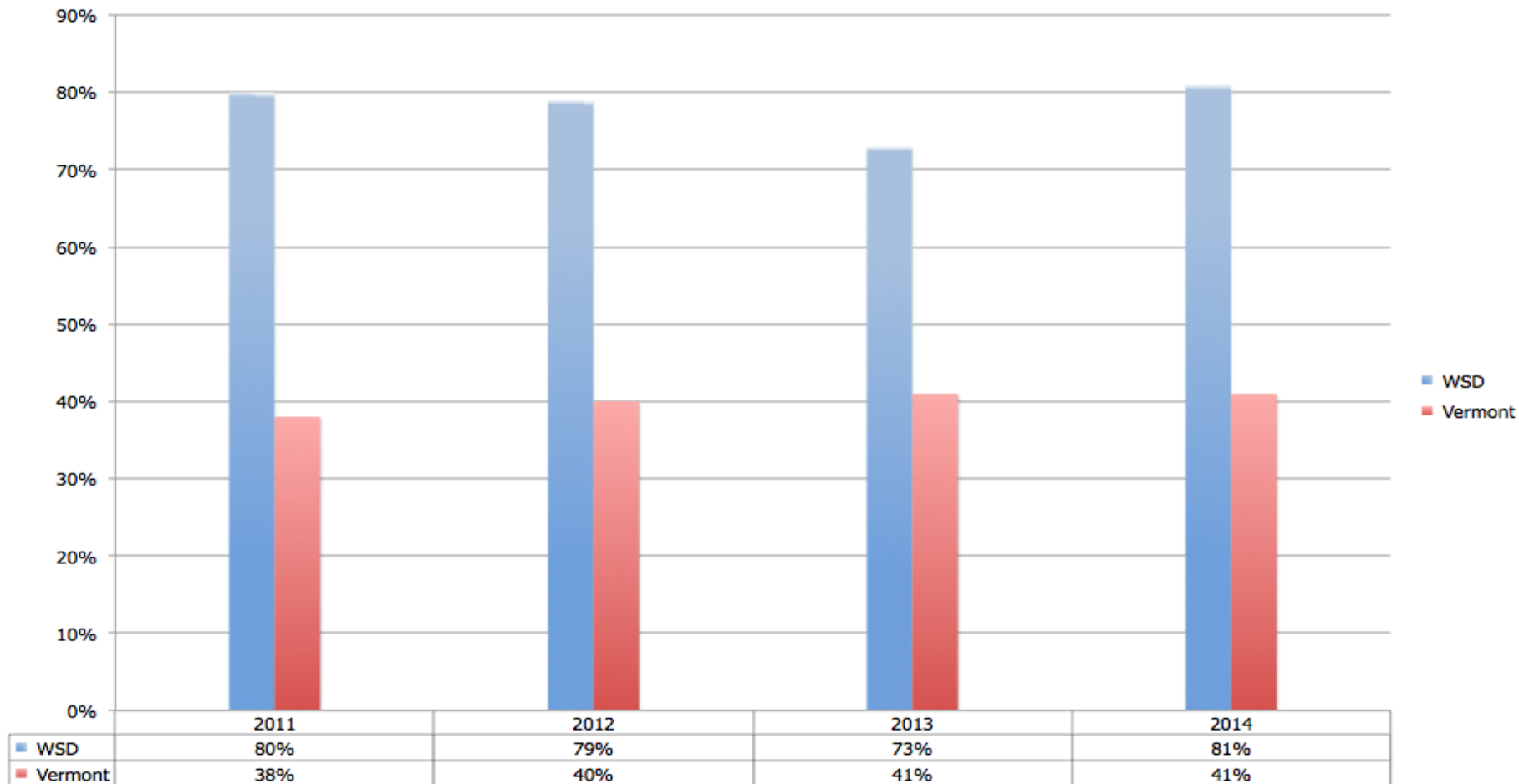
Ed Spending Per Equalized Pupil

(budgeted expenditures minus local revenues divided by equalized pupils)

<u>Ed Spending</u>	<u>Equalized Pupils</u>	<u>Ed Spending Rank</u>
FY 16- \$12,906	EP=925.03	
FY 15- \$12,735	EP=895.61	
FY 14- \$11,911	EP=924.88	225/282
FY 13- \$11,572	EP=938.70	215/286
FY 12- \$10,717	EP=937.63	231/286
FY 11- \$11,053	EP=890.76	216/286
FY 10- \$11,022	EP=844.95	211/286
FY 09- \$10,943	EP=808.27	193/289

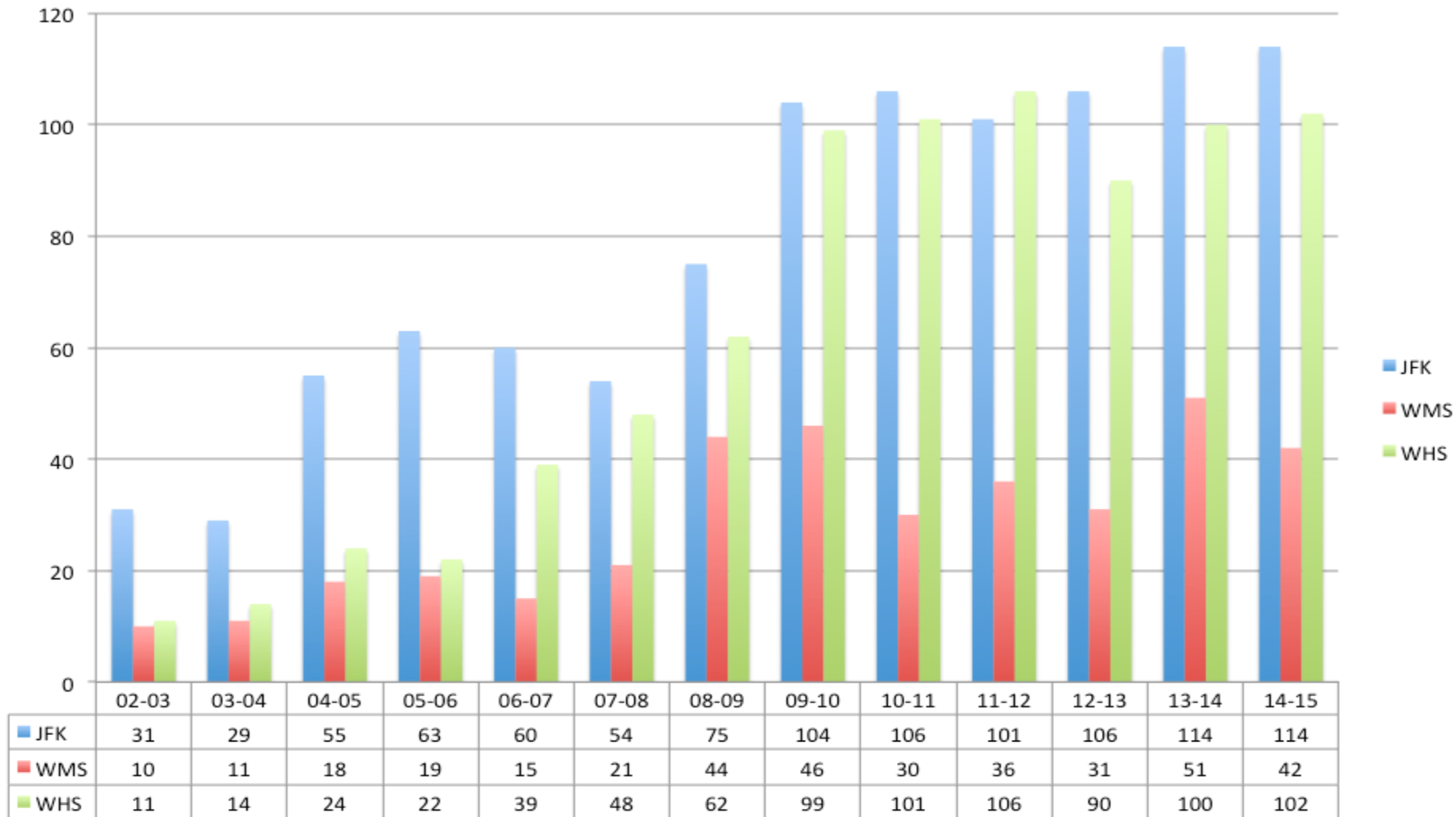
Demographic components:

WSD Free/Reduced Lunch Eligibility (FRL)



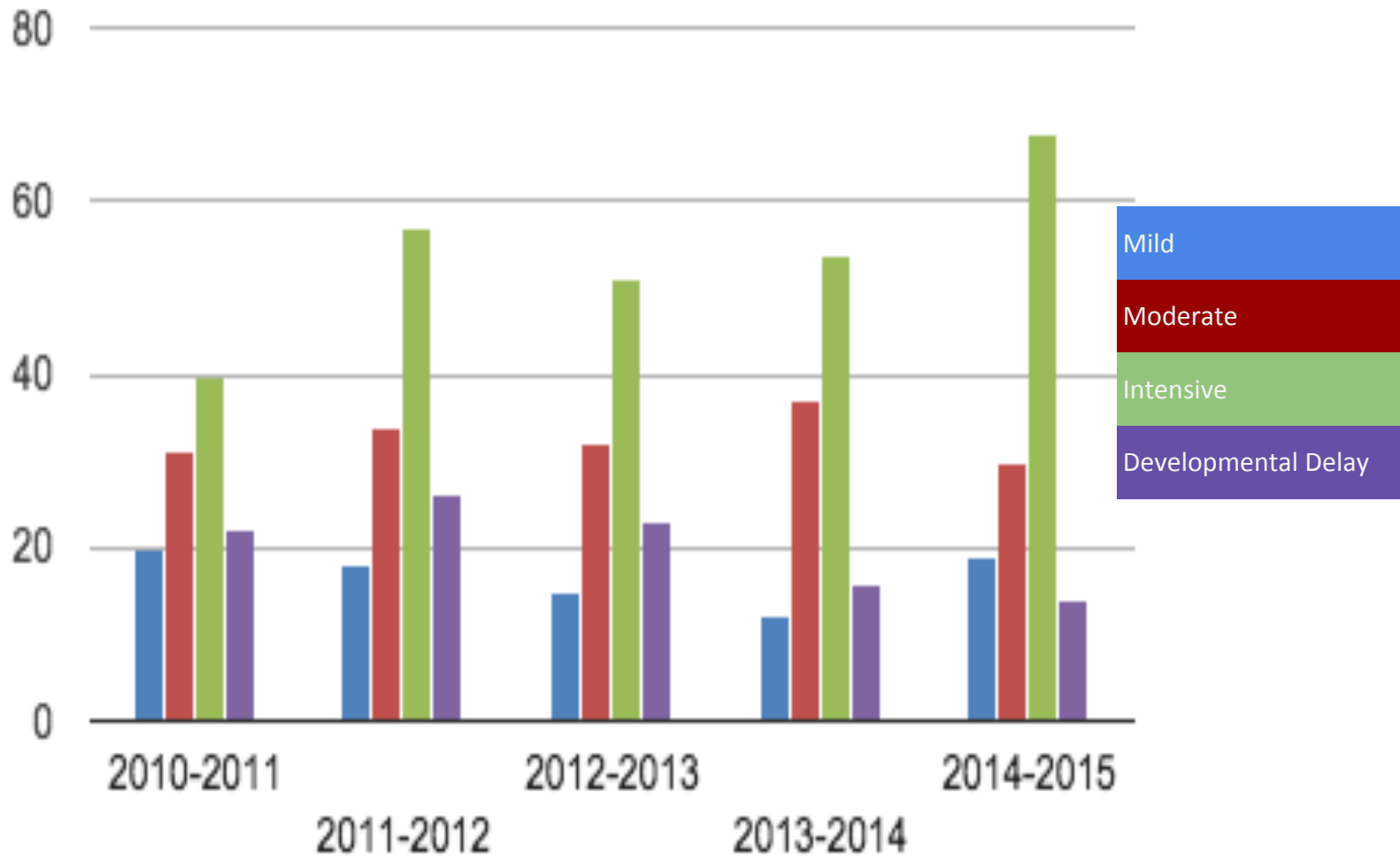
Demographic components:

ELL Population



Demographic components:

WSD Disability Comparative Data



You Vote on 2 Budgets

- Federal Budget is \$1,728,908
- This does not affect your local taxes.
- What is it?
 - Title I - Helps districts with a high poverty rate
 - Title IIA - Class size reduction & professional development
 - Title III - English Language Learners
 - IDEA – Supports children with disabilities
 - Medicaid - Supports school wide initiatives
 - Other – 21st Century (CCLC), Fresh Fruits & Vegetables, Tobacco Prevention, Homeless Education & Refugee/Immigrant grant
- Please vote **YES**

Regular School Operating Budget

	<u>FY 2015</u>	<u>FY 2016</u>	<u>Difference</u>
<u>Budget</u>	\$13,419,758	\$14,022,224	4.49%
<u>Eq. Pupils</u>	896	925	3.24%
<u>Ed. Spending</u> <u>Per Student</u>	\$12,735	\$12,906	1.34%

Investments & Reductions

→ Contractual obligations

- ◆ \$425K: Salaries
- ◆ \$249K: Benefits

→ Professional Svcs.

- ◆ \$33K: Payments to PreK partners

→ Interest/Dues/Judgement/Contingency

- ◆ (-\$44K): Tax Anticipation Note, accreditation expenses

→ Other Purchased Svcs.

- ◆ (-\$38K): Special Ed. tuition decrease & PreK transportation increase

→ Supplies & Materials

- ◆ (-\$16K): Athletics & Co-Curriculars

→ Equipment

- ◆ (-\$8K): Technology

Capital Planning & Favorable Budgets

- Cumulative effect over several years...
- Positive Fund Balance $\sim 1 - 1.5\%$
- Auditor says...

Reserve/Capital Projects

Balance Available

\$574,248

- **Final Phase of Unit Ventilators (High School) *Summer 2015- Estimated \$200,000***
- **Replacement of Air Handlers in the Gym *Summer 2017 - Estimated \$300,000***
- **Replacement of Air Handlers in Locker Rooms *Summer 2018 -Estimated \$150,000***
- **Boiler Design- *Over next 3 years \$60,00***
- **Boiler Replacement - *Summer 2020- Estimated \$1.5 Million***

Well OK,
But How Will It Affect My Taxes?

Tax Rate Factors

Assuming State Tax Rate at \$1.00

Factor	Tax Rate Impact	Cumulative Impact	Explanation
Before any change in these 5 annual factors in FY 16	-.86%	-.86%	<ul style="list-style-type: none">Revenues are projected to increase slightly
(1) Equalized Pupil Count	-3.29%	-4.15%	<ul style="list-style-type: none">K-12 pupil count increased by ~30
(2) Common Level of Appraisal (CLA)	2.73%	-1.42%	<ul style="list-style-type: none">CLA decreased from 101.11 % to 98.34 %
(3) State Base Funding per Pupil	-.82%	-2.24%	<ul style="list-style-type: none">Assumes a \$77 increase from \$9,382 to \$9,459 per pupil
(4) State Homestead Education Tax Rate	2.04%	-.20%	<ul style="list-style-type: none">Assumes a 2 cent increase per \$1,000, from \$.98 to \$1.00.
(5) District Education Spending	4.49%	4.29%	<ul style="list-style-type: none">Assumes \$100K fund balance application

Tax Impact

(Household Income below \$99K)

<u>Household Income</u>	<u>2015</u> 2.66%	<u>2016</u> 2.65%
\$90,000	\$2,394	\$2,385
\$80,000	\$2,128	\$2,120
\$70,000	\$1,862	\$1,855
\$60,000	\$1,596	\$1,590
\$50,000	\$1,330	\$1,325
\$40,000	\$1,064	\$1,060

Tax Impact

(Household Income above \$99K)

<u>House</u> <u>Value</u>	<u>2015</u>	<u>2016 (Est.)</u>	<u>Monthly</u> <u>Diff.</u>
\$150,000	\$1,994	\$2,079	\$7.08
\$175,000	\$2,327	\$2,426	\$8.21
\$200,000	\$2,659	\$2,772	\$9.42
\$225,000	\$2,991	\$3,119	\$10.63
\$250,000	\$3,324	\$3,465	\$11.75
\$275,000	\$3,656	\$3,812	\$12.96
\$300,000	\$3,989	\$4,158	\$14.08

Property Tax Relief

- If your adjusted gross household income is less than \$99,000 you are likely to be eligible for a reduction of your education property tax.
- Eligibility for property tax relief is based on your household income, home value, and city school tax rate, and will be applied to your 2015-16 tax bill. Renters may also be eligible.
- The maximum 2015 Property Tax Adjustment is \$8,000.
- Pre-bates apply to the **EDUCATION TAX ONLY**

In Conclusion

- The budget we have presented to you reflects the programs and supports needed to prepare our students for a rapidly changing world. We greatly appreciate your past and continued support!

“The only person who is educated is the one who has learned how to learn and change.”

-Carl Rogers (1902-1987)

Caveats

- The tax rate for Winooski will increase based on the current information provided by the state;
- The Vermont homestead tax rate and Base Education Amount per Student are subject to revision by the legislature.
- Please call your representatives if you have an opinion:
 - Diana Gonzalez – 661-4053
 - Clem Bissonnette – 655-9527
 - Speaker of the House, Shap Smith – 828-2245
 - Governor Peter Shumlin – 828-3333

Get More Details & Ask Questions:

- Call a school board member:
 - Michael Decarreau – 310-4032
 - Tori Cleiland – 655-7678
 - Jen Corrigan - 233-7642
 - Jay Lambert - 655-2942
 - Julian Portilla - 399-0241
- The Annual Report is available at:
 - Website: www.wdschools.org
 - School
 - City Hall
 - Library
 - Winooski Family Center
 - Casey Family Center
 - Senior Citizen Center
- Budget Informational sessions
 - **Televised Presentation**
 - Monday, February 16, 2015
 - Channel 17
 - 5:25-5:55 pm
 - **Community Dinner**
 - Wednesday, February 18, 2014
 - O'Brien Community Ctr.
 - 6:00 pm
 - **Annual Meeting**
 - Monday, March 3, 2014
 - WSD Performing Arts Center (PAC)
 - 6:00 pm - City Presentation
 - 7:30 pm - School Presentation

Vote!

- March 3rd
7 a.m. - 7 p.m.
- Senior Center on
Barlow Street

Please



State Factors

- CLA *decreased* from 101.11% to 98.37%.
 - This means the state thinks your property value *increased* a bit.
- State Based Funding per Pupil estimated to be **\$9,459**.
 - Not firm number until the Legislature adjourns.
- Per student cost divided by the state figure gives you a Spending Adjustment of **136.344%** ($12,906 / 9,459$).
 - This is *down* from last year's Adjustment of **137.17%**.
- *Your taxes vary by the Spending Adjustment.*

Prebate?

- Your taxes are based on your total household income
- State says 1.94% multiplied by the **spending adjustment** of 136.344%
- You will pay 2.65% of your total household income on education tax
- Last year you paid 2.66%





No Prebate?

- The decrease in CLA means the state thinks your property is worth more than last year
- The estimated state set homestead tax rate is currently 1.00 cents (this could change)
- Based on the above, we anticipate that your tax rate will be \$1.3860
- Based on this information, the tax rate has increased by 4.29%

Non-Residential Tax Rate

- Does **NOT** affect your tax rate
- State sets the rate which is anticipated to be \$1.53 this year.
- Last year, the rate was \$1.46
- Increase of 4.88%